



ALPI

ALPI

Erable Fries

Product code (10.03)

ALPI

ELM Burl

Product code (10.05)

ALPI

California Burl

Product code (10.06)

ALPI

Walnut Burl

Product code (10.07)

A close-up photograph of Myrtle Burl wood, showing a complex, swirling, and concentric grain pattern in a light tan or yellowish-brown hue.

ALPI

Myrtle Burl
Product code (10.08)

A close-up photograph of Walnut 2 Flamed wood, featuring a dark brown, vertically oriented grain with a prominent, slightly wavy texture and a large, dark, irregular knot or inclusion in the center.

ALPI

Walnut 2 Flamed
Product code (10.11)

A close-up photograph of Walnut Stripped wood, showing a dark brown, vertically oriented grain with a smooth, uniform texture and a subtle, consistent color throughout.

ALPI

Walnut Stripped
Product code (10.12)

A close-up photograph of Walnut 2-Flamed wood, displaying a medium brown, vertically oriented grain with a smooth texture and a large, dark, irregular knot or inclusion in the center.

ALPI

Walnut 2-Flamed
Product code (10.13)

A close-up photograph of American Walnut wood, showing a light brown color with a vertical grain pattern.

ALPI

American Walnut

Product code (10.16)

A close-up photograph of Walnut Planked wood, showing a dark brown color with a vertical grain pattern.

ALPI

Walnut Planked

Product code (10.17)

A close-up photograph of Wavy American Walnut wood, showing a light brown color with a vertical grain pattern that has a wavy, undulating appearance.

ALPI

Wavy American Walnut

product Code (10.19)

A close-up photograph of Indian Rosewood wood, showing a dark brown color with a vertical grain pattern.

ALPI

Indian Rosewood

Product code (10.23)

ALPI

Rosewood 2 Flamed
Product code (10.26)

ALPI

Balanced Wenge
Product code (10.31)

ALPI

Dark Wenge
Product Code (10.32)

ALPI

Wenge 2 Flamed
Product code (10.34)

Ammara Ebony wood texture featuring a dark, almost black surface with fine, vertical, light-colored grain lines.

ALPI

Ammara Ebony
Product code(10.42)

Gabon Ebony wood texture featuring a dark, charcoal-colored surface with a more pronounced, irregular grain pattern.

ALPI

Gabon Ebony
Product Code (10.43)

Datuk Ebony New 2017 wood texture featuring a dark, reddish-brown surface with prominent, vertical, wavy grain lines.

ALPI

Datuk Ebony New 2017
Product code (10.44)

Oak wood texture featuring a light, warm-toned surface with a fine, vertical grain pattern.

ALPI

OAK
Product code (10.61)

ALPI

Balanced Oak
Product code (10.63)

ALPI

Decape Oak
Product Code (10.64)

ALPI

Smoky Grey Oak
Product code (10.65)

ALPI

Balanced Grey Oak
Product code (10.66)

ALPI

Breeze Oak

Product code (10.69)

ALPI

Teak 2 Flamed

Product Code(10.73)

ALPI

Teak

Product code (10.74)

ALPI

Icecool oak

Product code (10.82)

ALPI

Sand Oak

Product code- (10.83)

ALPI

Smoked Oak

Product Code (10.85)

ALPI

Straight Oak

Product code (10.86)

ALPI

Natural Oak

Product code (10.87)



ALPI

Thermo 2 - Flamed
Product code (10.92)



ALPI

Moka Oak
Product code (10.94)



ALPI

Planked Oak
Product Code (10.96)




ALPI

Platinum Oak
Product code (11.02)



ALPI

Dark Grey Oak
Product code (11.04)




ALPI

Titanium Oak
Product code (11.05)



ALPI

Light Grey Oak
Product code (11.06)



ALPI

Sand Erable
Product code (11.07)

ALPI

Dark Grey Lati
Product code (11.11)

ALPI

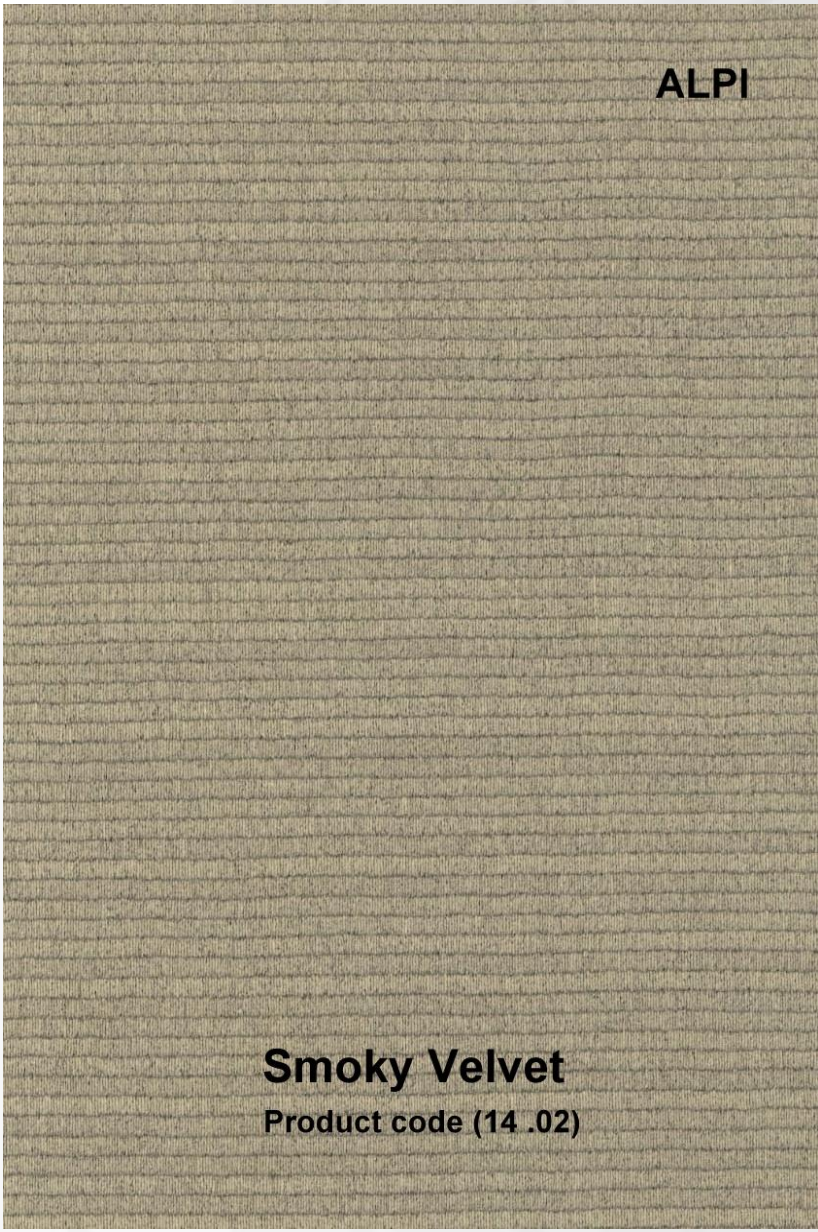
Light Grey Lati
Product code (11.12)

ALPI

Living Rock - GR013
Product code (13.09)

ALPI

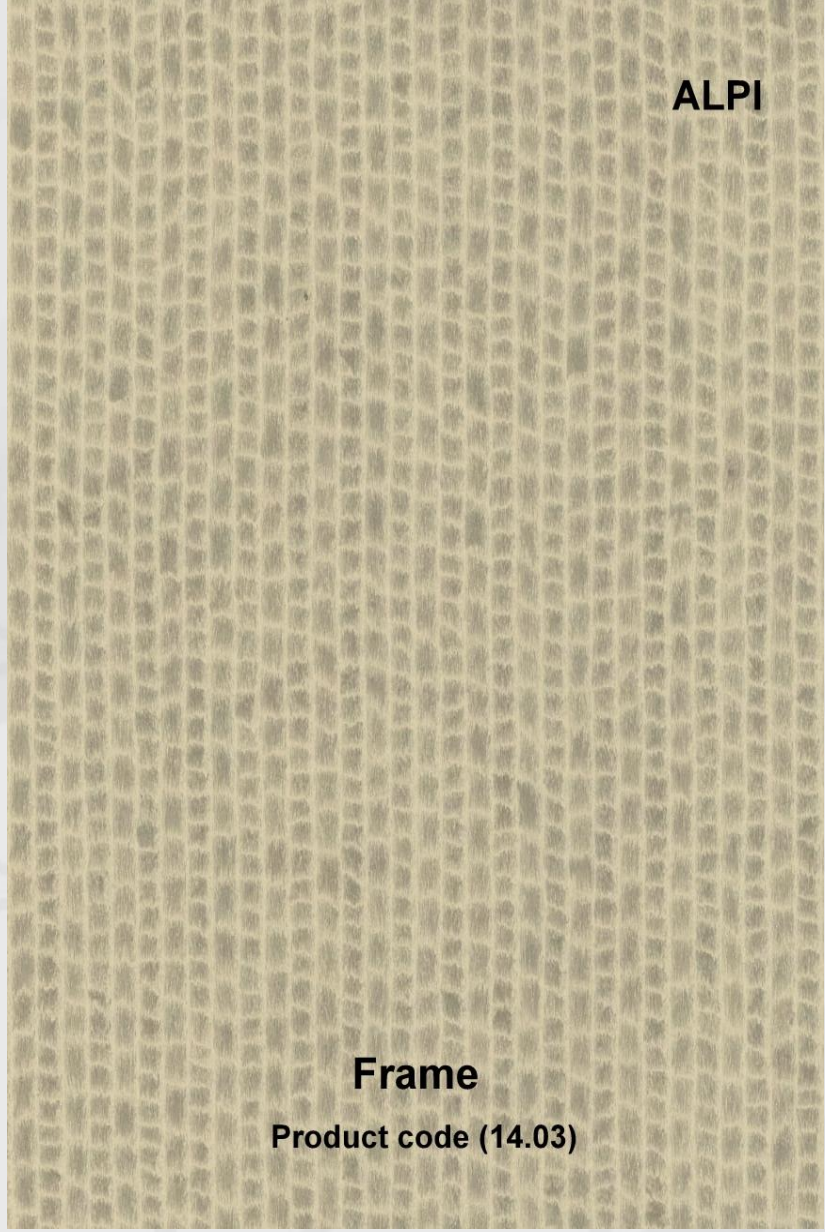
Day & Night Twill
Product code (14.01)



ALPI

Smoky Velvet

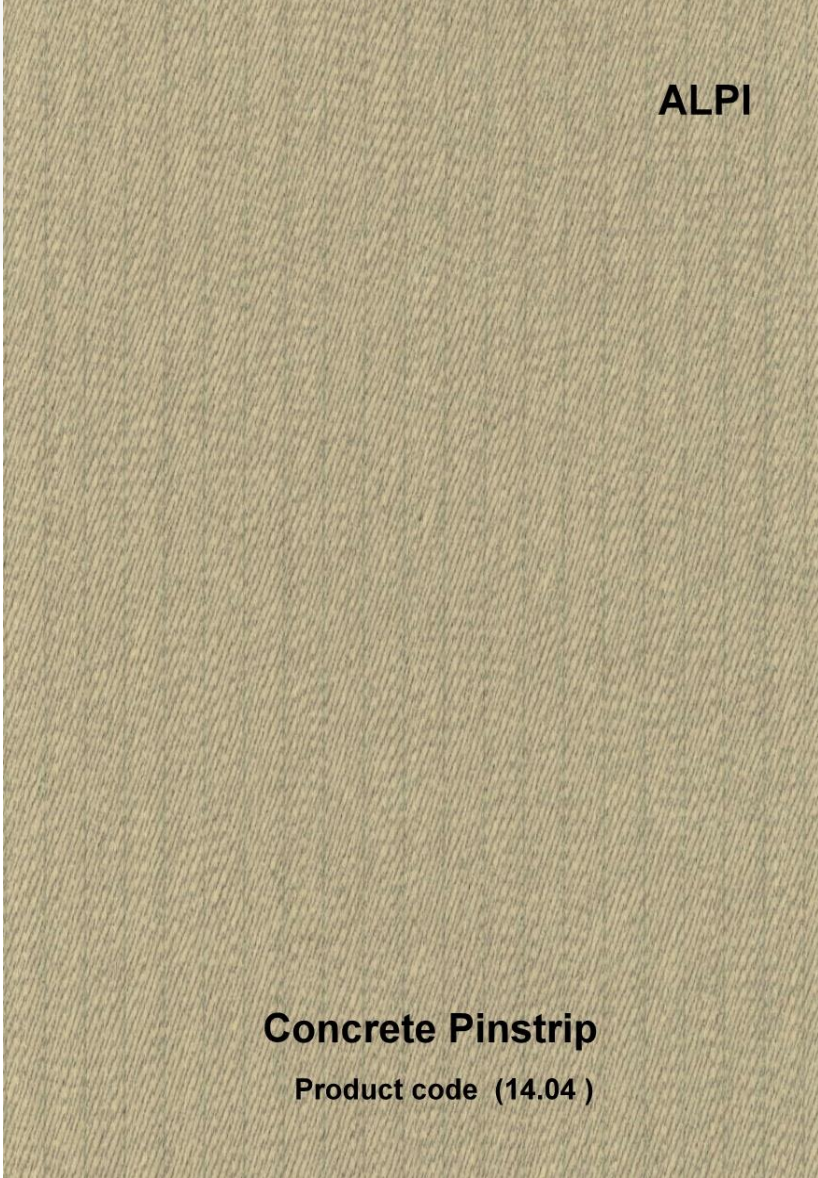
Product code (14 .02)



ALPI

Frame

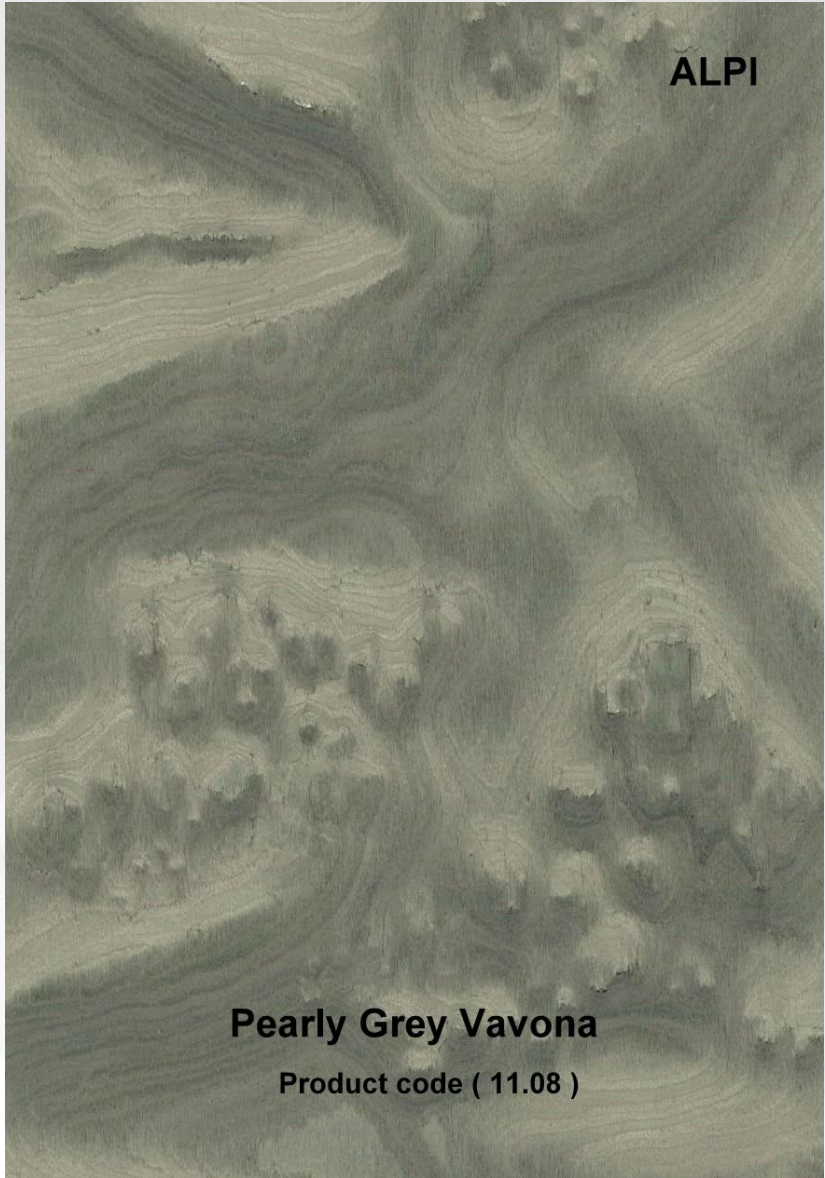
Product code (14.03)



ALPI

Concrete Pinstrip

Product code (14.04)



ALPI

Pearly Grey Vavona

Product code (11.08)

A vertical panel showing a wood grain texture in a muted, olive-green color. The grain is oriented vertically and has a fine, consistent texture.

ALPI

Striped Sand
Product code (18.02)

A vertical panel showing a wood grain texture in a dark grey color. The grain is oriented vertically and has a fine, consistent texture.


ALPI

Striped Sand
Product code (18.06)

A vertical panel showing a herringbone wood pattern in a dark brown color. The pattern is formed by two shades of wood grain meeting at a central vertical line, creating a zig-zag effect.

ALPI

Tarsie 1 Grey
Product code (18.18)

A vertical panel showing a herringbone wood pattern in a light tan color. The pattern is formed by two shades of wood grain meeting at a central vertical line, creating a zig-zag effect.

ALPI

Tarsie 1 Sand
Product code (18.17)



ALPI

Planked Grey
Product code (18.23)



ALPI

Planked Black
Product code (18.24)



ALPI

1 Flamed
Product code (18.26)



ALPI

Pirarucu
Product code (18.31)



ALPI

Sushi Brown
Product code (18.33)



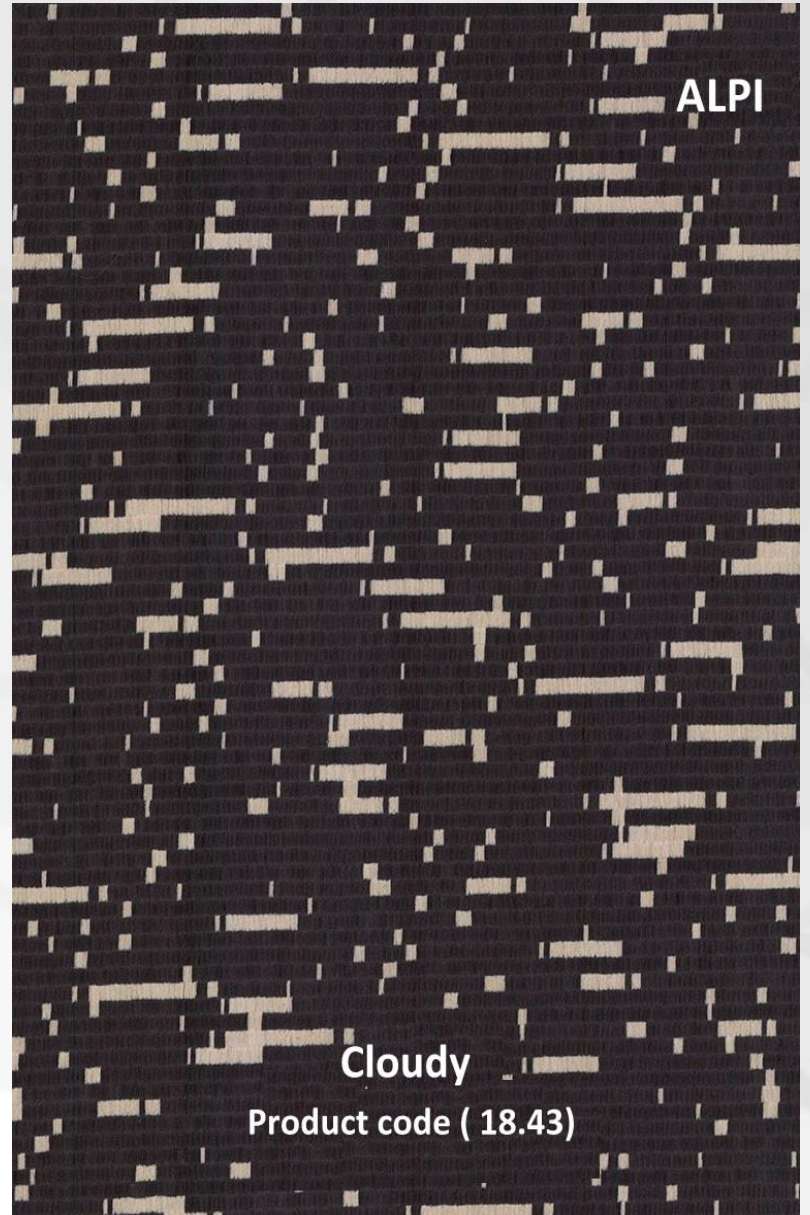
ALPI

Sushi Dark Grey
Product code (18.34)



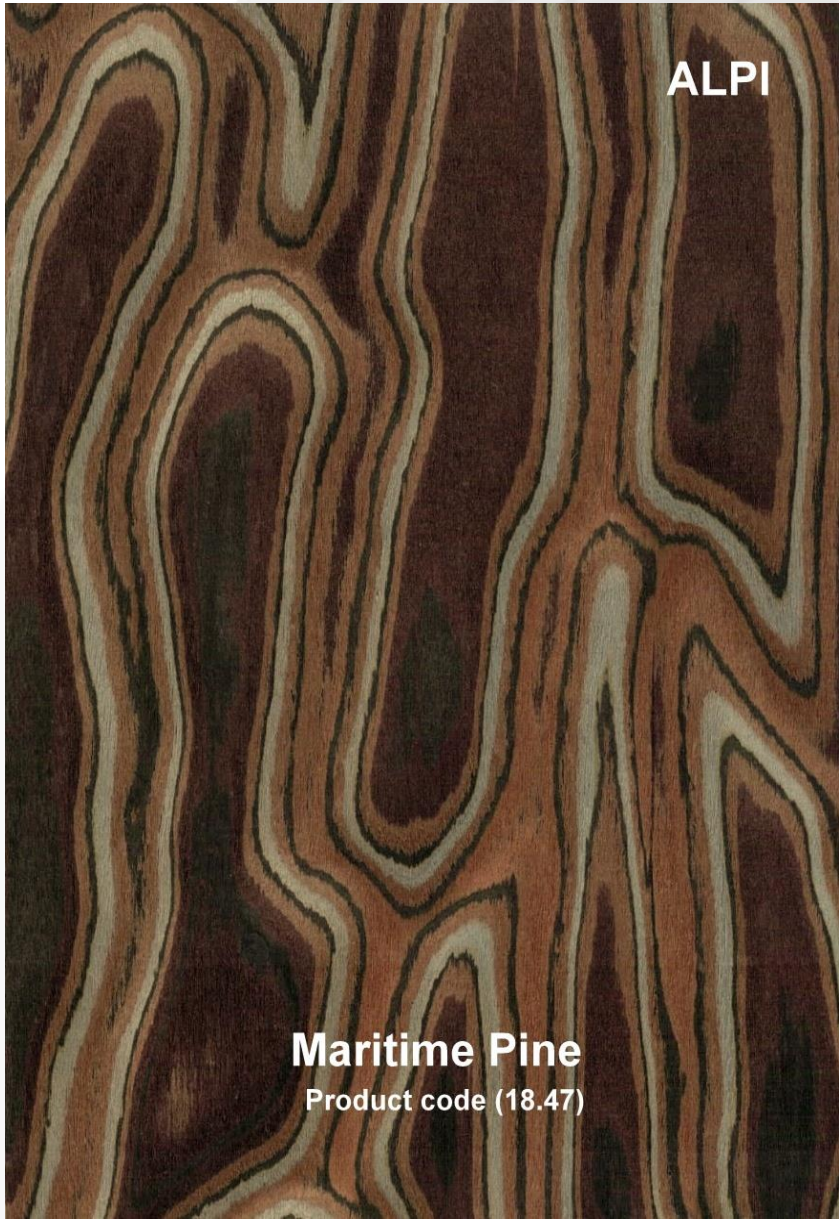
ALPI

Grid Wood
Product code (18.42)



ALPI

Cloudy
Product code (18.43)



ALPI

Maritime Pine
Product code (18.47)



ALPI

Flamed Grey
Product code (18.52)



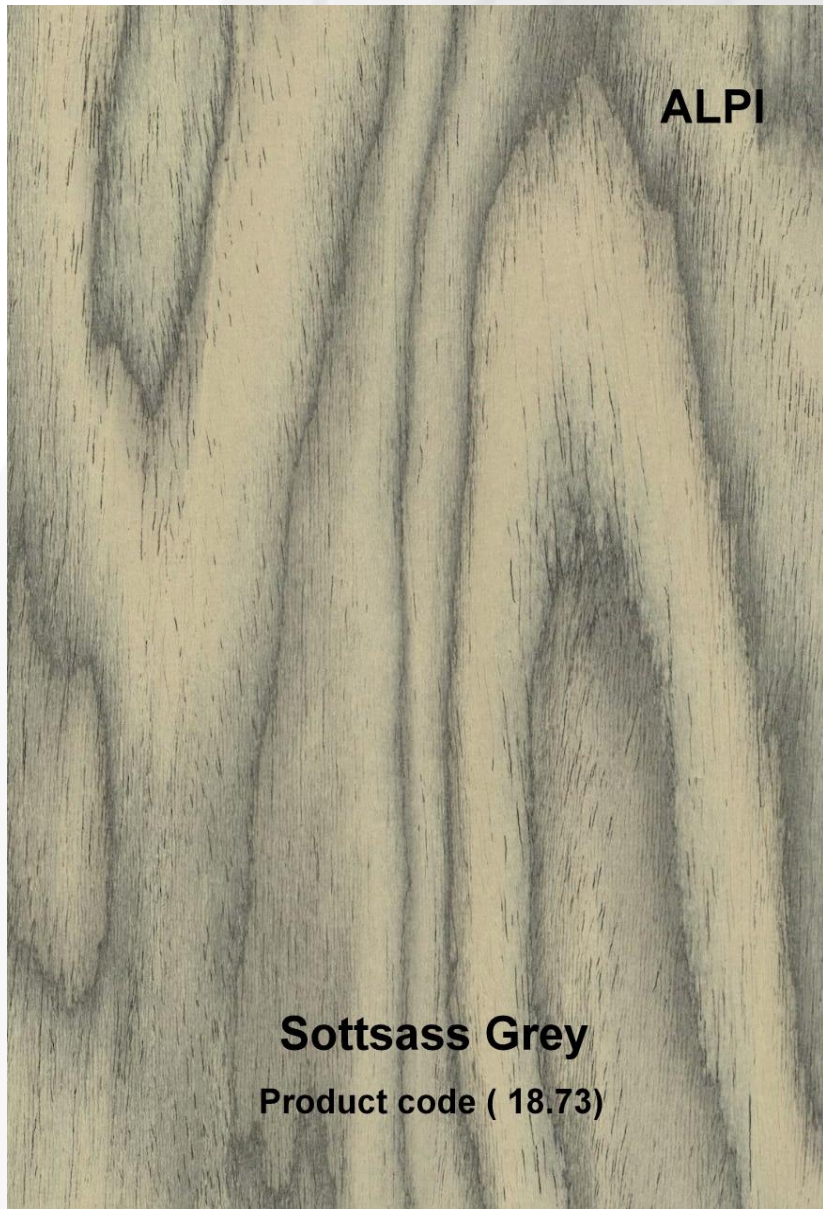
ALPI

Ikat 3
Product code (18.54)



ALPI

Ikat 2
Product code (18.55)



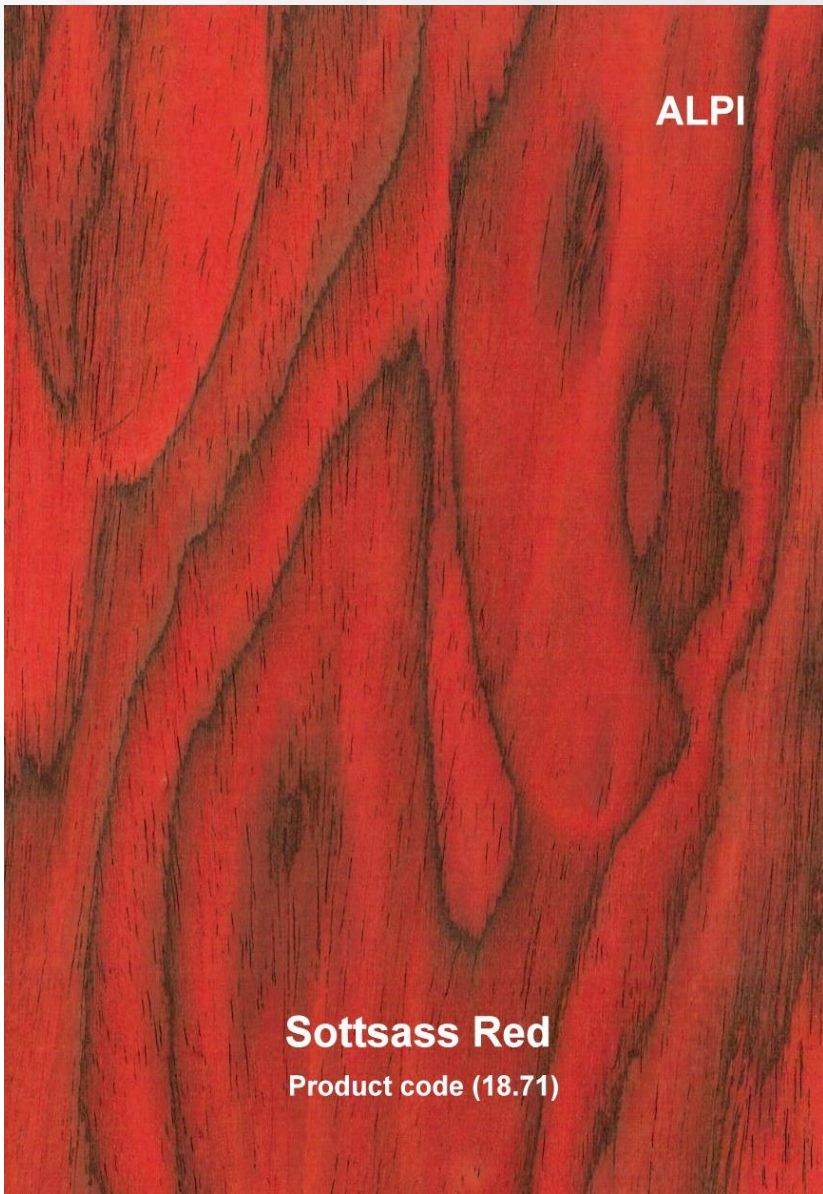
ALPI

Sottsass Grey
Product code (18.73)



ALPI

Sottsass Orange
Product code (18.70)



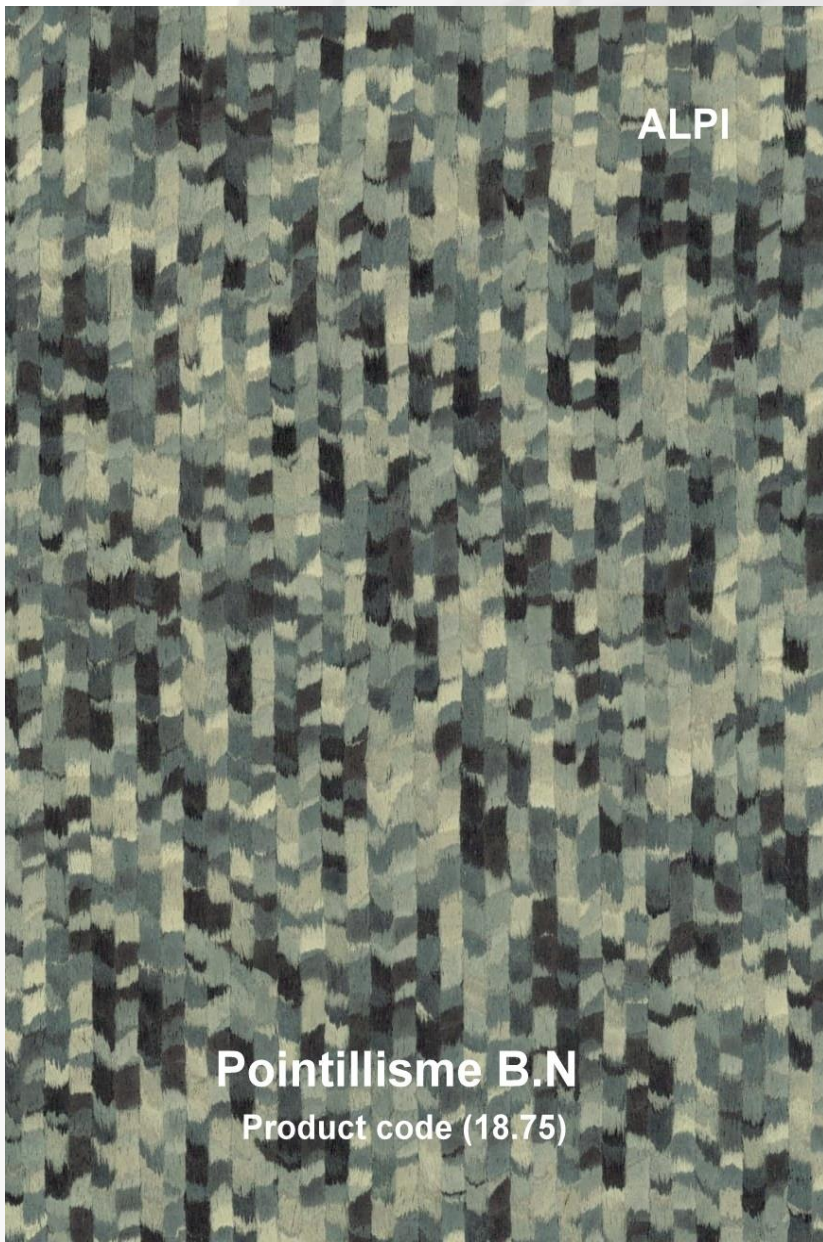
ALPI

Sottsass Red
Product code (18.71)



ALPI

Sottsass Brown
Product code (18.72)



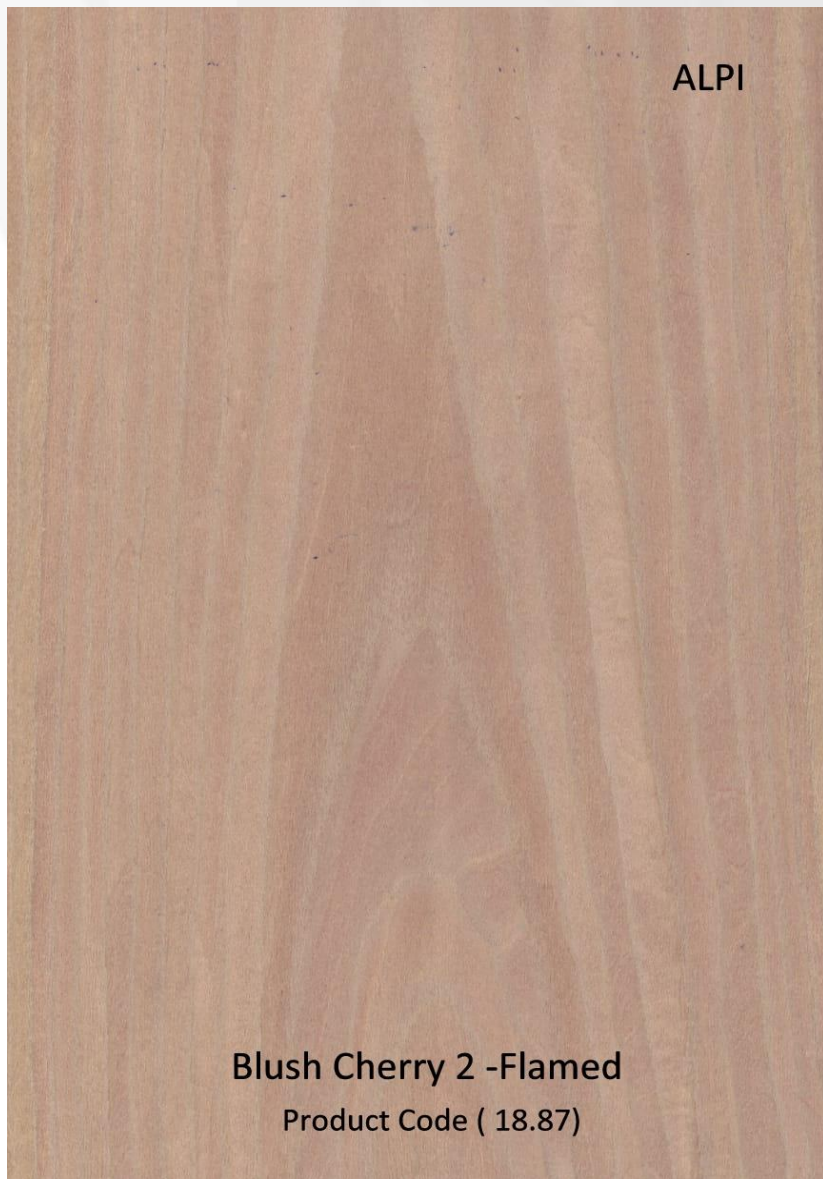
ALPI

Pointillisme B.N
Product code (18.75)



ALPI

Pointillisme Col
Product code (18.74)



ALPI

Blush Cherry 2 -Flamed
Product Code (18.87)



ALPI

Honey Cherry 2 Flamed
Product code (18.88)

ALPI

Tarsie 2 Black
Product code (18.14)

ALPI

Argento

ALPI

Ikat 1 White
Product code (18.56)

ALPI

COLOUR BOLCK TARSIE CHEVRON NO - 11



A close-up view of a wood veneer chevron pattern. The pattern consists of alternating bands of light-colored wood and dark, almost black, wood, creating a zigzag effect. The wood grain is clearly visible in each band.

ALPI

COLOUR BLOCK TARSIE CHEVRON NO - 5
(BESPOKE)

A close-up view of a wood veneer chevron pattern. The pattern consists of alternating bands of dark, greyish-blue wood and medium brown wood, creating a zigzag effect. The wood grain is clearly visible in each band.

ALPI

COLOUR BLOCK TRASIE CHEVRON NO - 6
(BESPOKE)

A close-up view of a wood veneer chevron pattern. The pattern consists of alternating bands of dark brown wood and medium brown wood, creating a zigzag effect. The wood grain is clearly visible in each band.

ALPI

COLOUR BLOCK TARSIE CHEVRON NO - 8
(BESPOKE)

A close-up view of a wood veneer chevron pattern. The pattern consists of alternating bands of light tan wood and medium tan wood, creating a zigzag effect. The wood grain is clearly visible in each band.

ALPI

COLOUR BLOCK TARSIE CHEVRON NO - 7
(BESPOKE)

A close-up photograph of a chevron pattern made from light-colored wood planks. The planks are arranged in a V-shape, with the grain of the wood running vertically. The pattern is consistent across the entire image.

ALPI

COLOUR BLOCK TARSIE CHEVRON NO - 9
(BESPOKE)

A close-up photograph of a chevron pattern made from light-colored wood planks with black inlay. The planks are arranged in a V-shape, with the grain of the wood running vertically. The black inlay is applied to the spaces between the planks, creating a high-contrast, geometric pattern.

ALPI

COLOUR BLOCK TARSIE CHEVRON NO - 10
(BESPOKE)

Thank You

