

LUXTURE'S CONCRETE CONCEPT

GRANIMITZ

The Manufactured Stone Veneers



DECORCEM

The Stamped Concrete



CONCRETE FACADES

The Exposed RCC



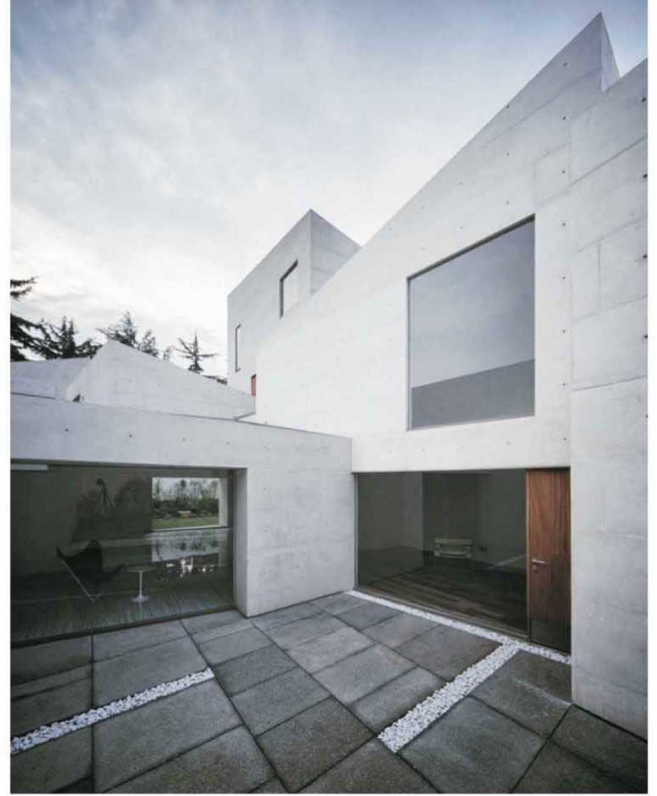
www.luxture.com

INTRODUCTION

While grey might be the first image that comes to mind when we think about concrete, allow us to help our mind eyes see little further.

As the common material, concrete shows one of the most essential beauty, with the natural appearance of calm charm. Material it self has a soft feel, rigid sense of warmth with cold and flu, so architects believe that this is a noble simplicity, seem to be simple, in fact, more then the magnificent effect.

Most human culture have brought an aesthetic sense to there building going beyond simply providing shelter or some other function.





REDEFINING ASTHETICS OF CONCRETE

Concrete, of course, is a popular building material that creates a distinctive architectural style that make many peoples like , but a good impression can be spoiled if there are too many pores on what was supposed to be smooth surface.

Its impossible to avoid pores in concrete. The material can behave unpredictably , which mean the size and number of pores may vary, there can be overlapping joints, shuttering undulations and marks which makes it worst.

If we overcome all above factors & develop working skills & technique to control the behavior of the concrete, no wonder it will help to achieve the architect's vision.

Finishing techniques can play revolutionary & economical way to change colours & visuals.

CONCRETE WITH IMPRESSION'S OF SHUTTERING WOODEN PLANKS



INNOVATION AND DEVELOPMENTS IS A CONTINUOUS PROCESS:

We had already felt our presence in the year 2008 by introducing for the first time in the nation the concept of decorative concrete under the name and style of DECOCEM (The stamped concrete), later we brought GRANIMITZ(manufactured stone veneers).



PATTERNS



Smooth

Honey Combed



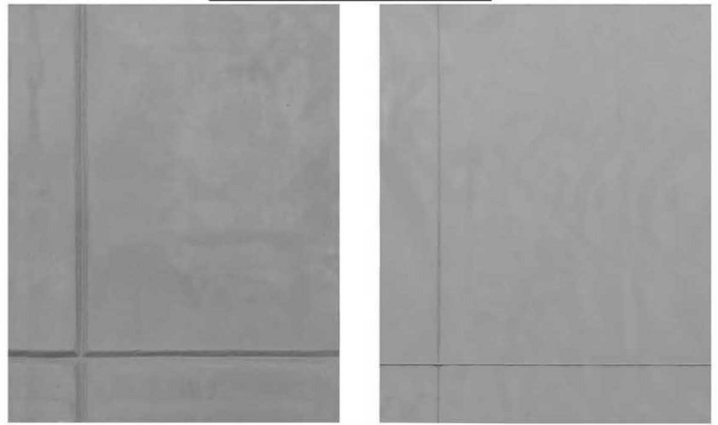
Trowel Marked

Rough Cast

Now here it is LUXTURS CONCRETE FACEDES (the visual or exposed concrete). We observed that the visual concrete can be used as an stylish element, specially in the luxury or prestige sector of architecture whether for singly family house, hotel or company headquarter. Whether it be the exterior, interiors, bedrooms, stairs, washrooms, living, dining rooms, Floors/Walls/Ceiling. Visual concrete speaks about the emotion of the building and reflects sophisticated life style.

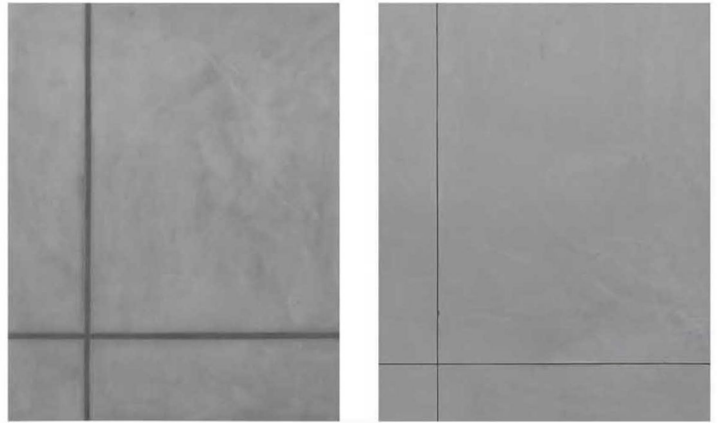
LUXTURES CONCRETE FACEDES the exposed or visual concrete is a new revolutionary building material which is applied with a thickness of 3-12 mm. LCF replicates like original concrete which can take on any shape and size which is perfect and without undulation.

GROOVES



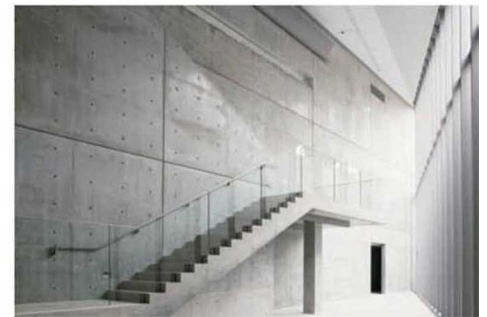
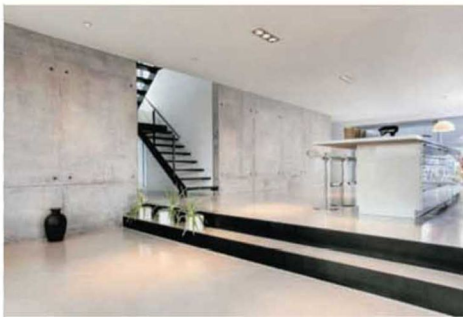
V Grooved

Shuttering Joint



Grouted Joint

Paper Joint



LCF is an effort to put into frame, the ideas of architects and designers to allow the concrete look fascinating and dramatic on walls, ceilings and floors, without compromising the rigidity and strength inherent in it.

Inspired by the aesthetic values of the concrete, our dedicated efforts has helped us to present it in various manners and styles, and to become an aesthetically powerful instrument.

The fact that the tremendous acceptance is taking place in attitudes towards the use of this material is demonstrated by the innumerable new buildings being created through out the world that reveals the outstanding structure and design properties concrete possesses.

The examples here shows a multifaceted often playful , approach to this material in terms of building art, technique of construction and scientific research- and its scope is by no means exhausted.



COLOURS



Light Tone



Mid Tone



Dark Tone



Black

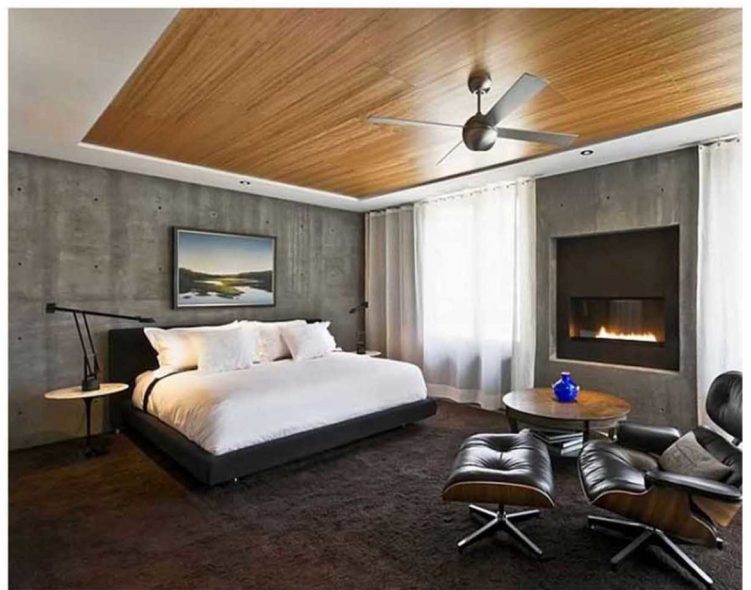


LCF is a modern concrete system comprising cement, hardest earthen material, polymer and special additives, modern technology, special tools and workmanship.

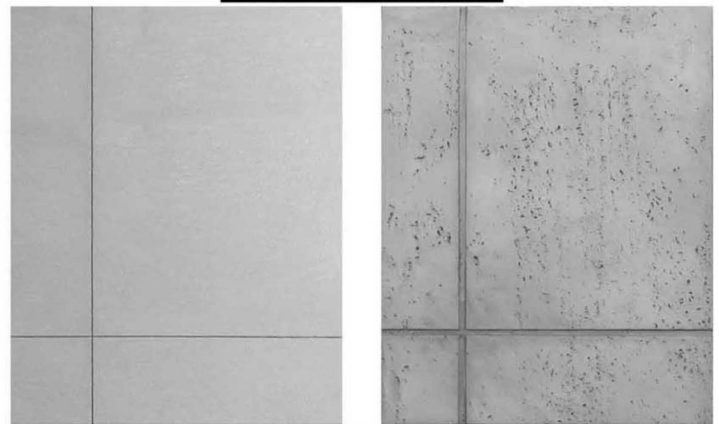
This all together makes our system a unique methodology to present concrete which is beautiful and withstands against the external weather calamities.

LCF can be presented in many ways, from fresh to antique look, matt to glossy or mirror effect, with various grooves and joints any many other customized look.

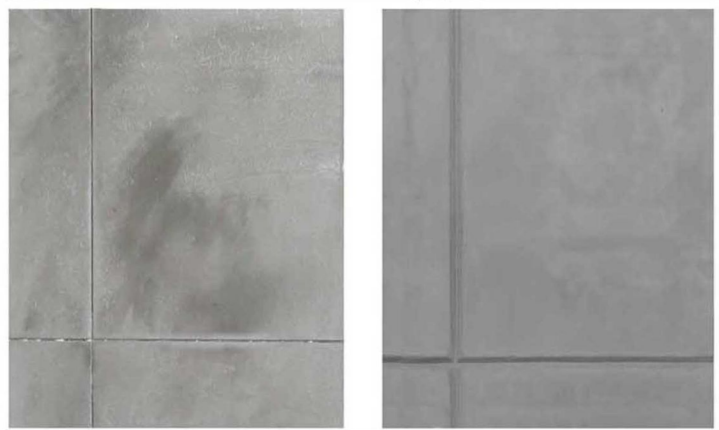
LCF is strong and durable like a sound concrete.



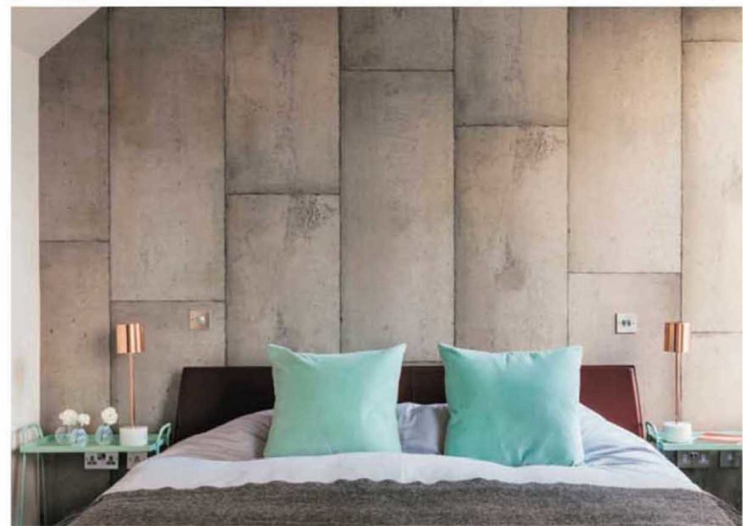
APPEARANCE



Fresh **Antique**



Wet **Grooved**



TECHNICAL DATA SHEET

Patterns

- Smooth
- Honey Combed
- Trowel Marked
- Rough Cast

Appearance

- Fresh
- Antique
- Wet
- Grooved

Test Results

- Water Absorption (%) 3.23
- Scrub Resistance >500cycles
- Slip & Mar Resistance >500cycles
- Wet Transverse Strength 4.5N/mm2
- Resistance to wear
- Average wear 2.54mm
- Maximum wear 2.98mm
- Individual specimens

Gloss Level

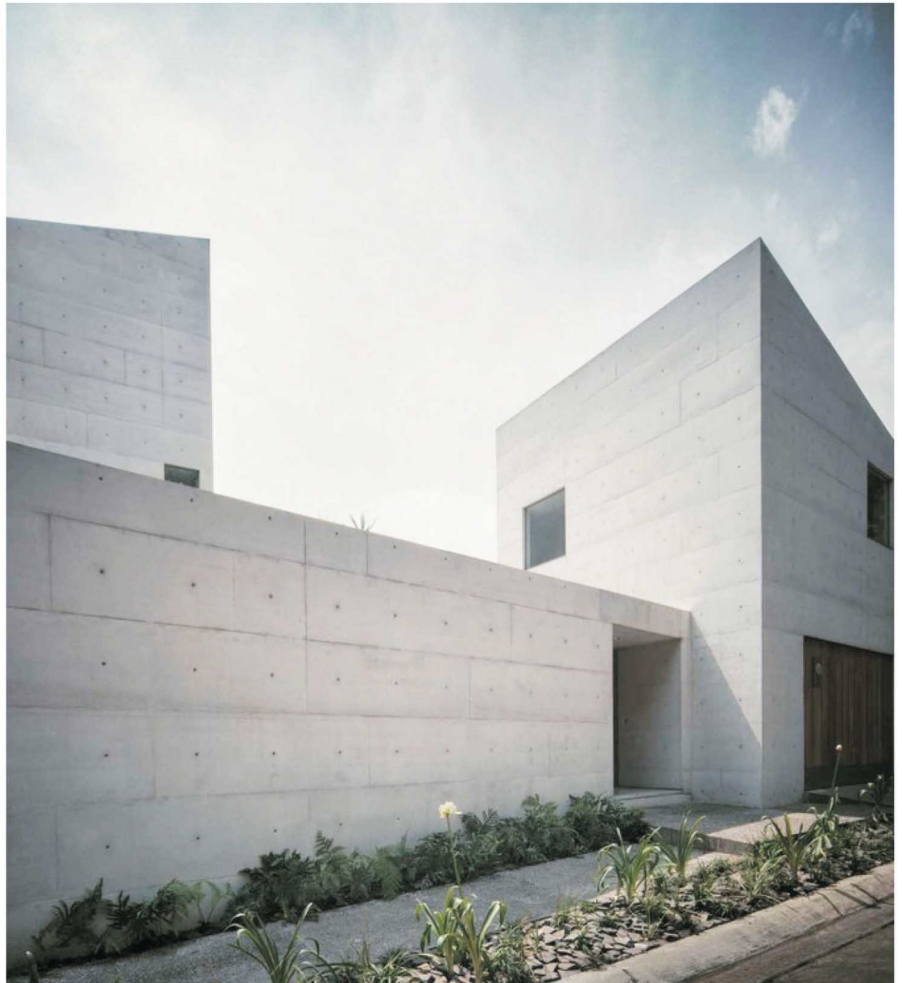
- Matt
- Satin
- Glossy
- Mirror Effect

Colours

- Light Tone Grey
- Mid Tone Grey
- Dark Tone Grey
- Black

Exclusive Features

- For Interior & Exterior
- Leveled & Smooth
- Free of ugly shuttering Joints
- Fungus & Algae resistance
- Original Colour of Concrete
- Fade & UV resistant
- Dirt & Dust resistant
- Water & Chemical resistant



CORPORATE OFFICE

H-114, Near Godrej Agrovet, New RIICO Industrial Area, Makhapura, Ajmer-305001 (Rajasthan), Phone: 0145-2695615
Email: enquiry@luxture.com Website: www.luxture.com

DISPLAY CENTRES

DELHI: 70/A-30, Rama Road, New Delhi-110005
JAIPUR: 105, First Floor, Ever Shine Tower, Amrapali Circle, Vaishali Nagar, Jaipur-302021 (Rajasthan)

CUSTOMER CARE +91-8003197741