



DESIGN LEADER

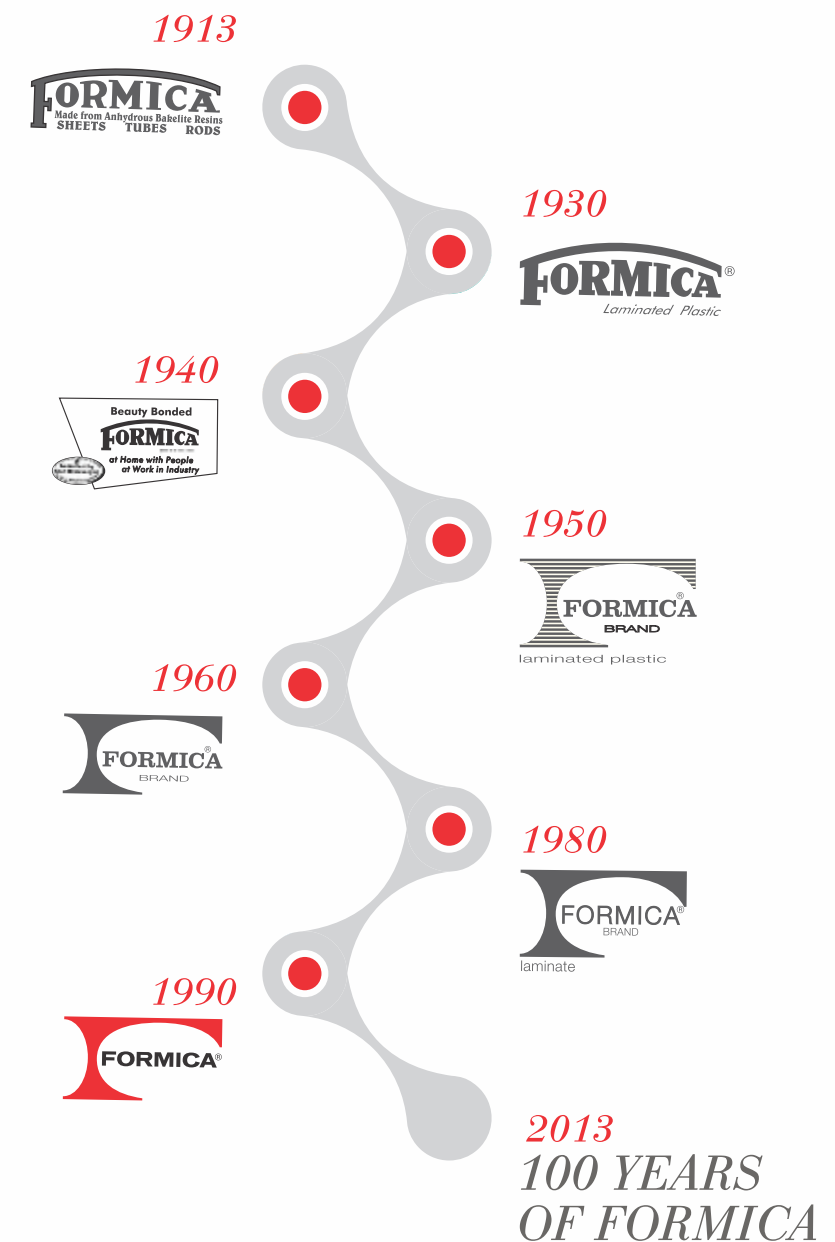
CLASSIC+
SERIES
COLLECTION **2018**

100 YEARS OF FORMICA

For 100 years, the story of the Formica® brand has been one of discovery and innovation. Formica is an iconic brand inextricably linked to the invention of the original High Pressure Laminate (HPL). Formica® brand celebrated 100 years in 2013.

Founded by Herbert A. Faber and Daniel J. O'Conor in the year 1913, Formica® has been a forerunner in laminates production worldwide. Before 1913, all laminates were made from the mineral mica but with roots in chemistry and engineering, Faber and Conor stumbled upon a crucial and more economical alternative and soon adopted this method of producing laminates that were strong, light, and excellent electrical insulators and since they became a very good substitute “for” the mineral “mica”, the brand was conceptually named “Formica”.

The heritage and brand reputation of the Formica Group of companies has been founded on quality, service and innovative product lines. Formica has developed an unrivaled expertise that ensures products meet the needs of their applications as well as market demands.





www.formica-india.com

FORMICA INDIA

Original Inventor of Laminate, Formica has achieved a strong and steady presence in the Indian market over the years. Headquartered in Delhi, Formica India boasts of colossal and hi-tech manufacturing plant in Gujarat. Meeting global standards, the state of the art manufacturing facility strive to achieve excellence with world class machinery, efficient work processes, strict safety measures for employees & high quality raw materials. Formica excels in the nationwide distribution system along with a team of dedicated trade partners and sales team.

Working closely with architects, designers and developers, the company is strategically positioned to offer new products and surfacing solutions that complement current design trends. The ongoing product design and development process underlines company's commitment to innovation.

Formica India offers a vast range of laminate choices in terms of patterns, structures and colours. All these ranges are a creation of well thought artistic ideas, matching and practical decor suitabilities.

Formica has created a huge range of laminates for all interiors & without compromising on looks, performance and safety.



The 'Original Inventor'
with 100 years of
innovation and excellence.



State-of-the-art Laminate
manufacturing unit at
Kalol, Gujarat.

Formica® Classic + Series

THE PREMIUM HIGH PRESSURE LAMINATES by FORMICA GROUP

- Formica® iconic range of 1mm laminates is a mix of fashion and functionality that are of great importance to architects and interior decorators.
- These laminates are manufactured from high-grade raw materials taking into consideration Indian environmental specifications following global standards.
- Standard offering is of 1mm thickness while 0.8 mm is also available on order.

WORLD CLASS LAMINATES

SATISFY YOUR PASSION FOR LIVING IN STYLE

FABRIC DECORS

Fabric designs have been in trend recently. It is the best way to add warmth to your interiors have been in trend recently.

EXOTIC WOOD SPECIES

Aesthetically designed laminates in exotic wood decors offer awesome feel to interiors, Exotic wood species are in great demand.

TILE DECORS

Our tile decor laminates can be an ideal and a viable replacement to ceramic tiles.

MARBLE

Marble laminates are evergreen and a fresh choice of discerning users.

SOLID COLORS WITH A TWIST

Crown finish leave an astonishing impact on all solid colours.

*Formica offers variety of complimentary finish to enrich the use of laminates.
Available in light and dark colours - the option makes it easy to use them in any and every interior.*

FINISHES

INSPIRED FROM NATURE

- The Invigorating New Finishes have reached pinnacle of laminates industry
- Experience the sence of touch; of beauty that is tangible
- Standard offering is of 1mm thickness while 0.8 mm is also available on order.



FI 1166 Light Acacia (STN)



FULL SHEET VIEW



FI 1167 Dark Acacia (STN)



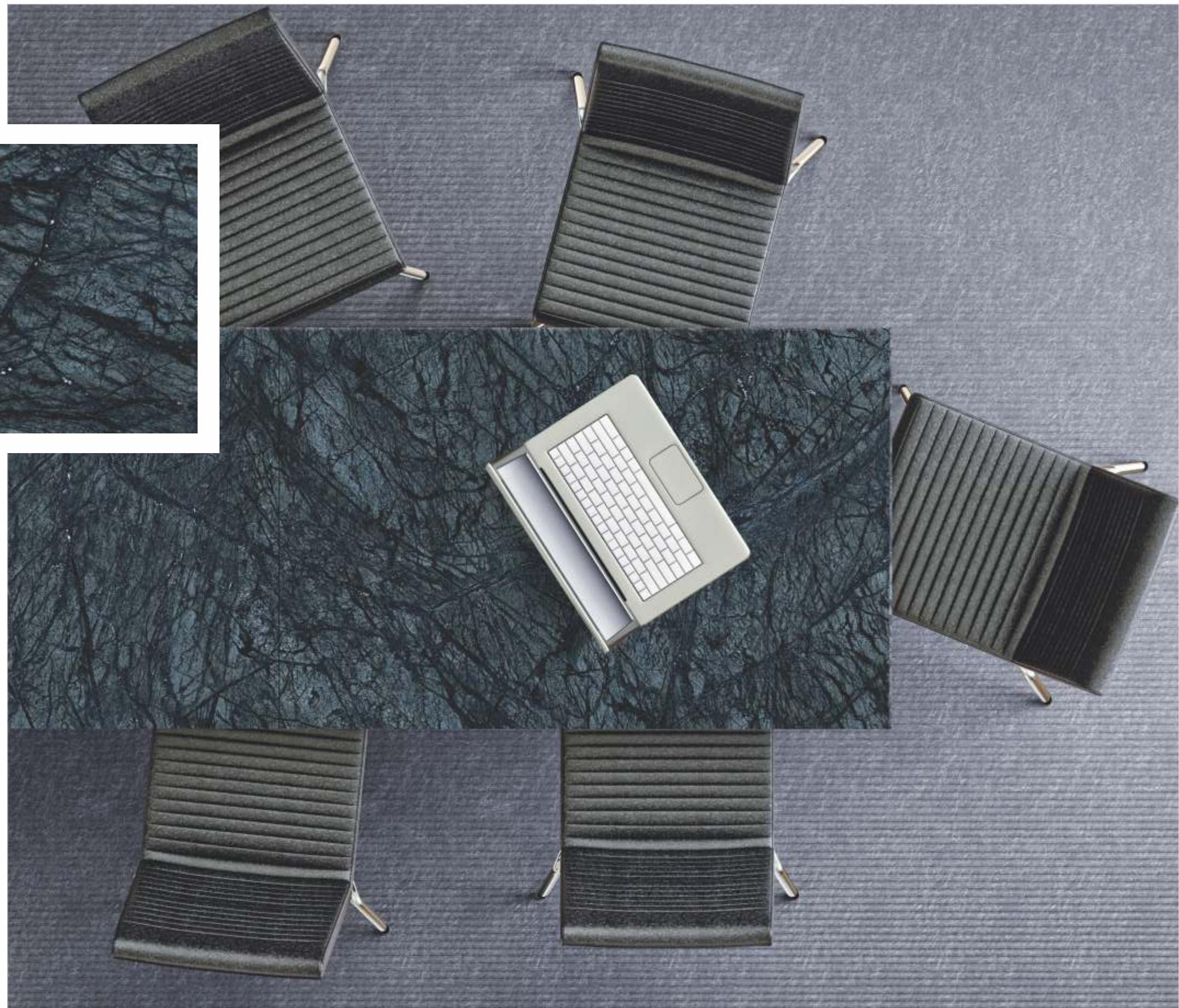
FULL SHEET VIEW +



FI 1681 Alabaster (STN)



FULL SHEET VIEW



FI 1680 Snowcrust (STN)



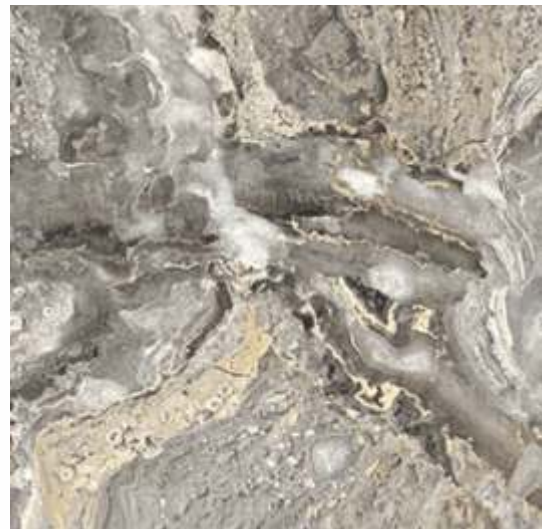
FULL SHEET VIEW



FI 1690 Milkyway (STN)



FULL SHEET VIEW



FI 1691 Starcluster (STN)



FULL SHEET VIEW



FI 1162 Choco Ash (DGL)



FULL SHEET VIEW



FI 1163 Ruffled Ash (DGL)



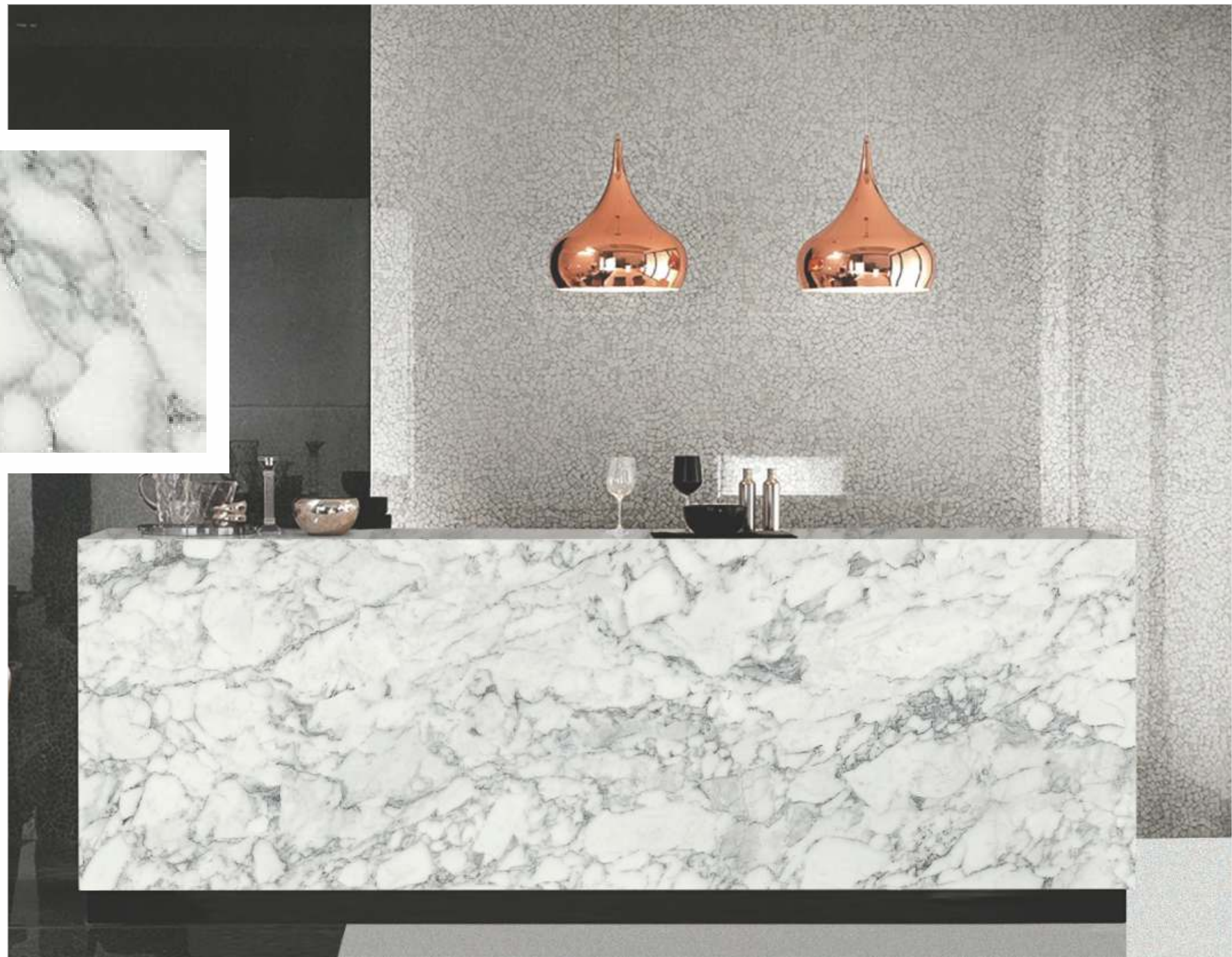
FULL SHEET VIEW +



FI 1684 Carrara Marble (DGL)



FULL SHEET VIEW



FI 1166 Light Acacia (DGL)



FULL SHEET VIEW



FI 1167 Dark Acacia (DGL)



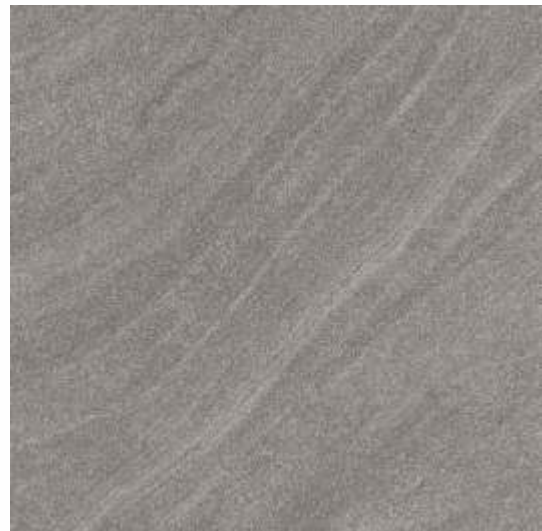
FULL SHEET VIEW



FI 1698 Greystone (DGL)



FULL SHEET VIEW



FI 1699 Sandstone (DGL)



FULL SHEET VIEW



FI 1681 Alabaster (DGL)



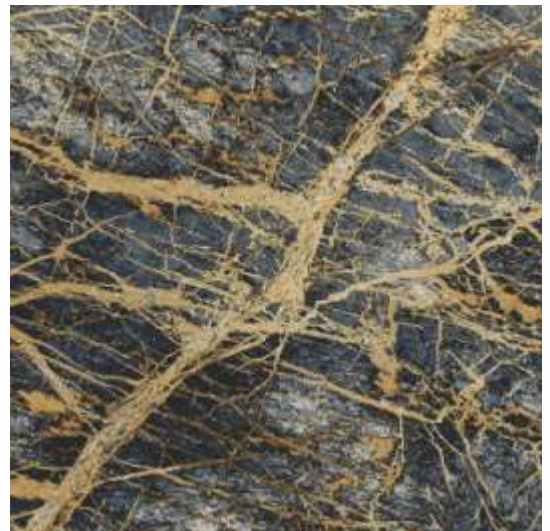
FULL SHEET VIEW



FI 1680 Snowcrust (DGL)



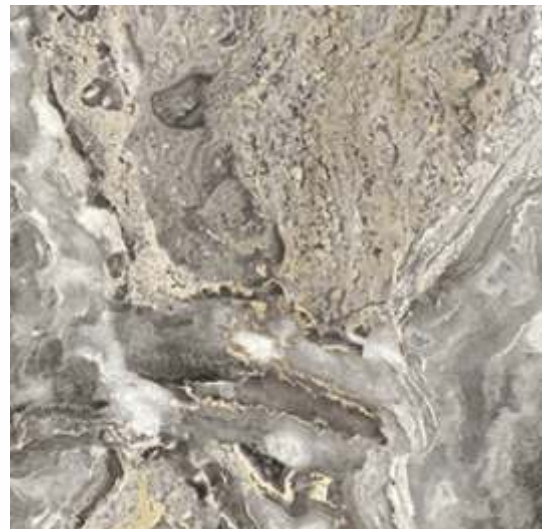
FULL SHEET VIEW



FI 1690 Milkyway (DGL)



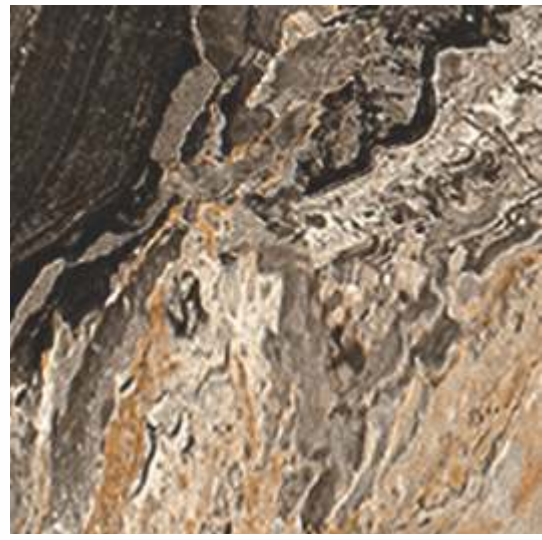
FULL SHEET VIEW



FI 1691 Starcluster (DGL)



FULL SHEET VIEW



FI 1556 Burgundy - IV (CRN)



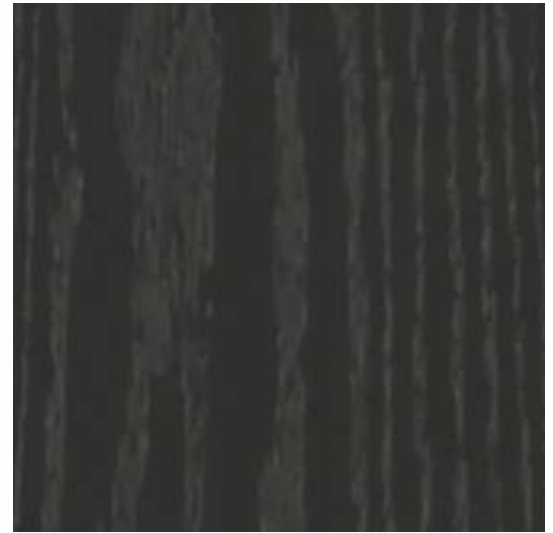
FULL SHEET VIEW



FI 1301 Black (CRN)



FULL SHEET VIEW



FI 1554 Light Rosy Brown
(CRN)



FULL SHEET VIEW



FI 1525 Graphite Grey
(CRN)



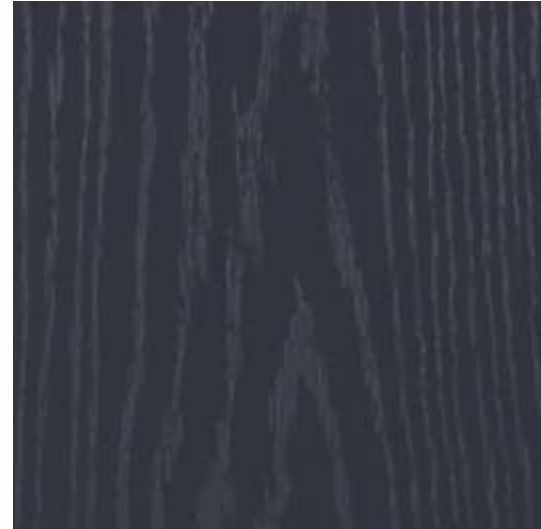
FULL SHEET VIEW



FI 1523 Dark Slate Blue
(CRN)



FULL SHEET VIEW



FI 1302 Polar White (CRN)



FULL SHEET VIEW



FI 1164 Moon Beech (OAK)



FULL SHEET VIEW



FI 1165 Exotic Beech (OAK)



FULL SHEET VIEW



FI 1168 Wine Oak (OAK)



FULL SHEET VIEW



FI 1169 Champagne Oak
(OAK)



FULL SHEET VIEW



FI 1162 Choco Ash (OAK)



FULL SHEET VIEW



FI 1163 Ruffled Ash (OAK)



FULL SHEET VIEW



FI 1155 Ebony Oak (OAK)



FULL SHEET VIEW



FI 1154 Parched Oak (OAK)



FULL SHEET VIEW



FI 1153 Conform Oak (OAK)



FULL SHEET VIEW



FI 1187 Vintage Walnut (RWD)



FULL SHEET VIEW



FI 1161 Ancient Walnut (RWD)



FULL SHEET VIEW



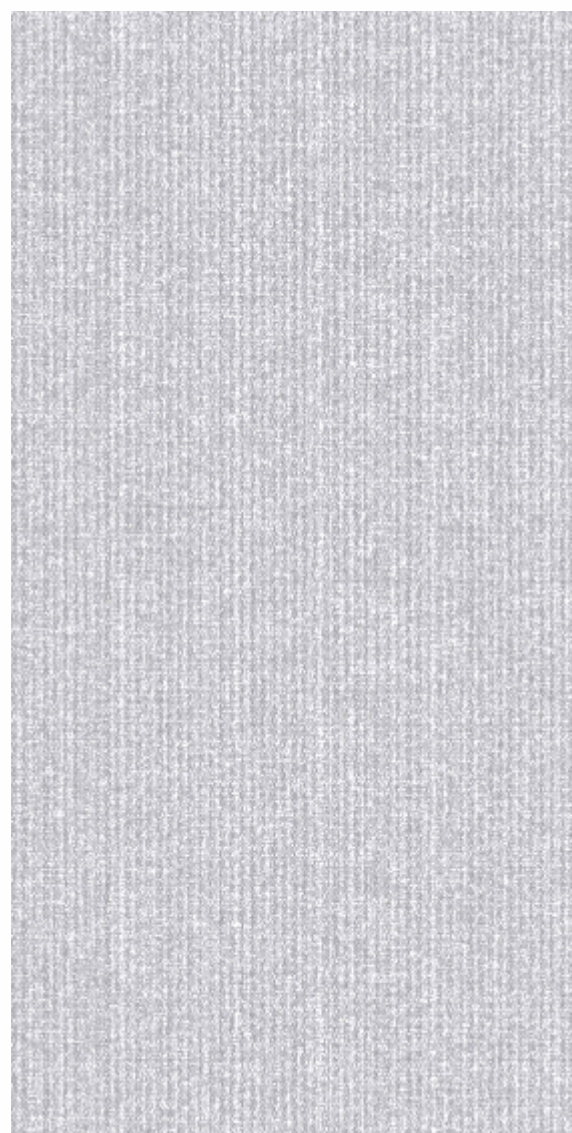
FI 1188 Creameweave (RWD)



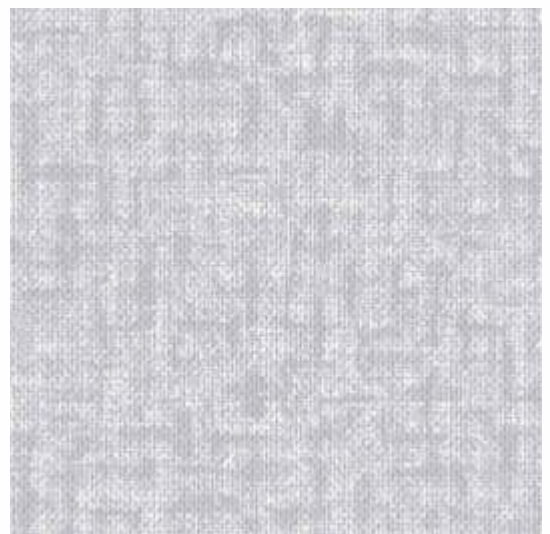
FULL SHEET VIEW



FI 1189 Greyweave (RWD)



FULL SHEET VIEW





FI 1150 Timber Canvas Wood (RWD)



FULL SHEET VIEW



FI 1151 Timber Canvas Dark
(RWD)



FULL SHEET VIEW



FI 1152 Timber Canvas Grey
(RWD)



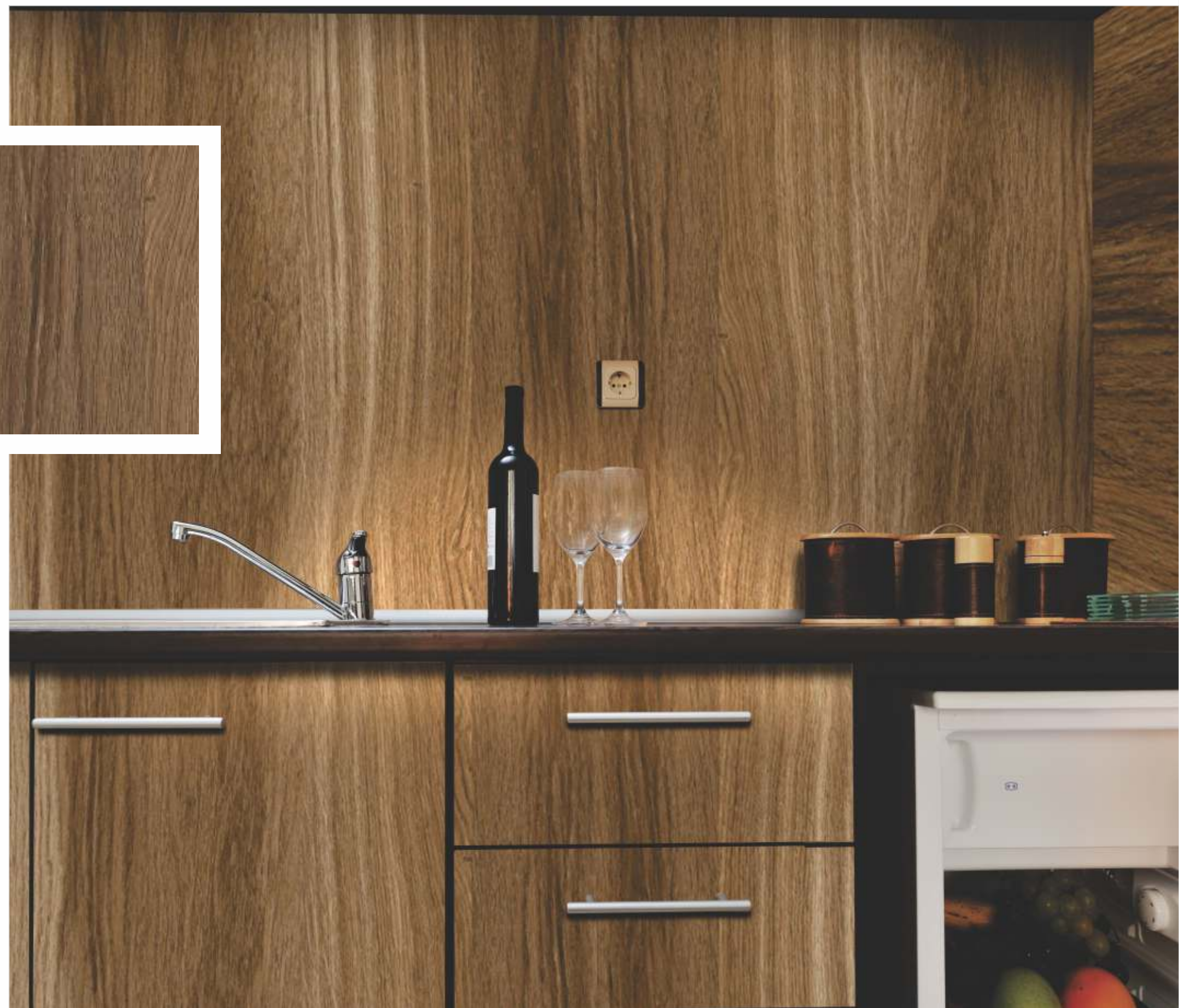
FULL SHEET VIEW



FI 1146 Wildweald (RWD)



FULL SHEET VIEW



FI 1147 Lightweald (RWD)



FULL SHEET VIEW



FI 1156 Driftwood (WOD)



FULL SHEET VIEW



FI 1158 Raywood (WOD)



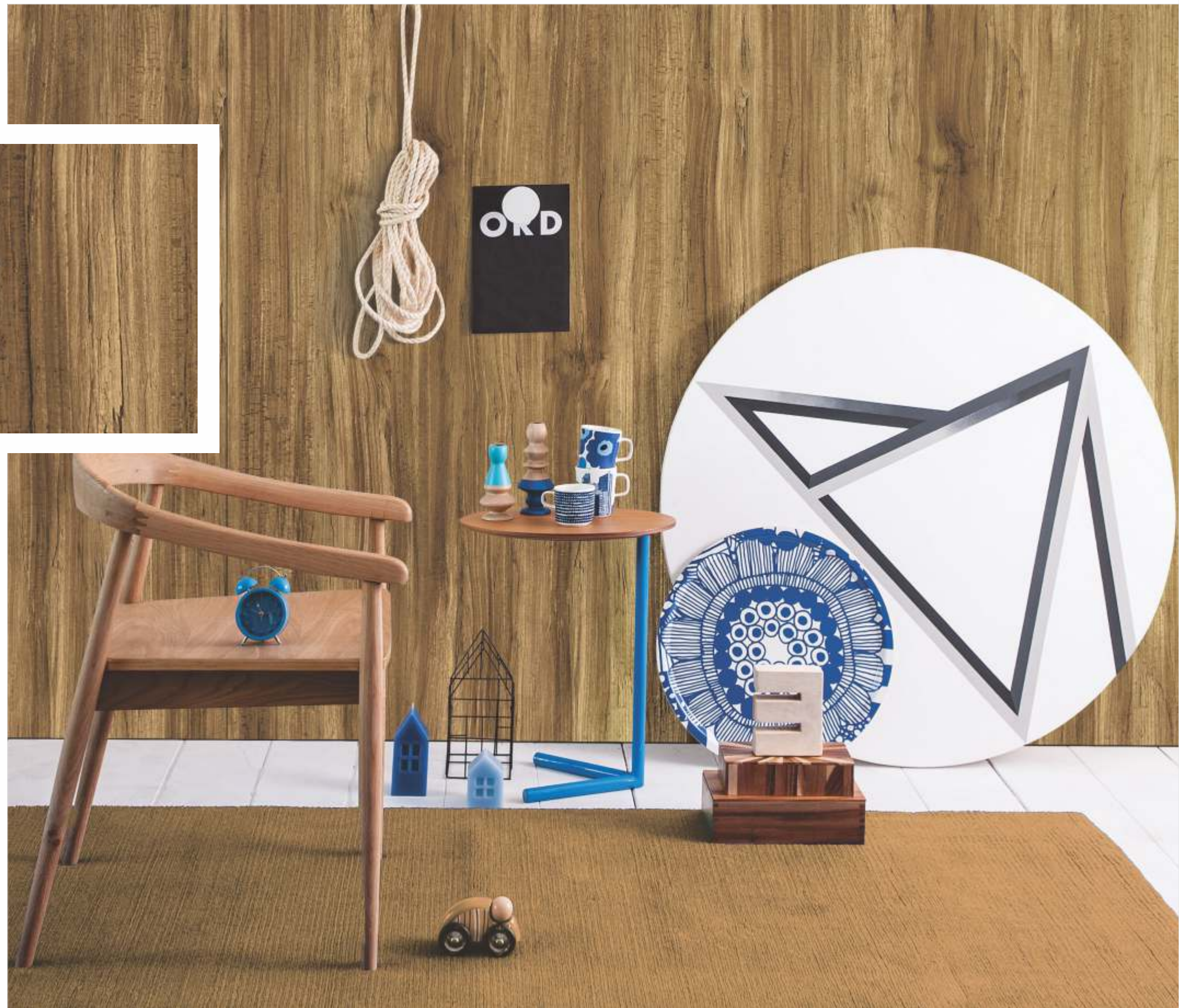
FULL SHEET VIEW



FI 1157 Finewood (WOD)



FULL SHEET VIEW



FI 1682 Brown Stile (RCT)



FULL SHEET VIEW



FI 1683 Grey Stile (RCT)



FULL SHEET VIEW



FI 1695 Aglow (DMT)



FULL SHEET VIEW



FI 1696 Tan (DMT)



FULL SHEET VIEW



FI 1697 Ashen (DMT)



FULL SHEET VIEW



FI 1684 Carrara Marble (DMT)



FULL SHEET VIEW



FI 1159 Rainbow Woodland
(DMT)



FULL SHEET VIEW



FI 1160 Cloud Woodland
(DMT)



FULL SHEET VIEW



FI 1148 Alternate Oak Gentle
(OGN)



FULL SHEET VIEW



FI 1149 Alternate Oak Rich
(OGN)



FULL SHEET VIEW



SUEDE FINISH

- commotion of colors filters innate dross, with a heart in rave and soul in gloss.
- Smooth & clear to see through suede finish laminates give a sensuous feeling and are a beauty par excellence



FI 1187 Vintage Walnut (SF)



FULL SHEET VIEW



SUEDE FINISH

*COMMOTION OF COLORS FILTERS INNATE DROSS,
WITH A HEART IN RAVE AND SOUL IN GLOSS.*

Smooth & clear to see through suede finish laminates give a sensuous feeling and are a beauty par excellence

FI 1161 Ancient Walnut (SF)



FULL SHEET VIEW



FI 1164 Moon Beech (SF)



FULL SHEET VIEW



FI 1165 Exotic Beech (SF)



FULL SHEET VIEW



FI 1698 Greystone (SF)



FULL SHEET VIEW



FI 1699 Sandstone (SF)



FULL SHEET VIEW



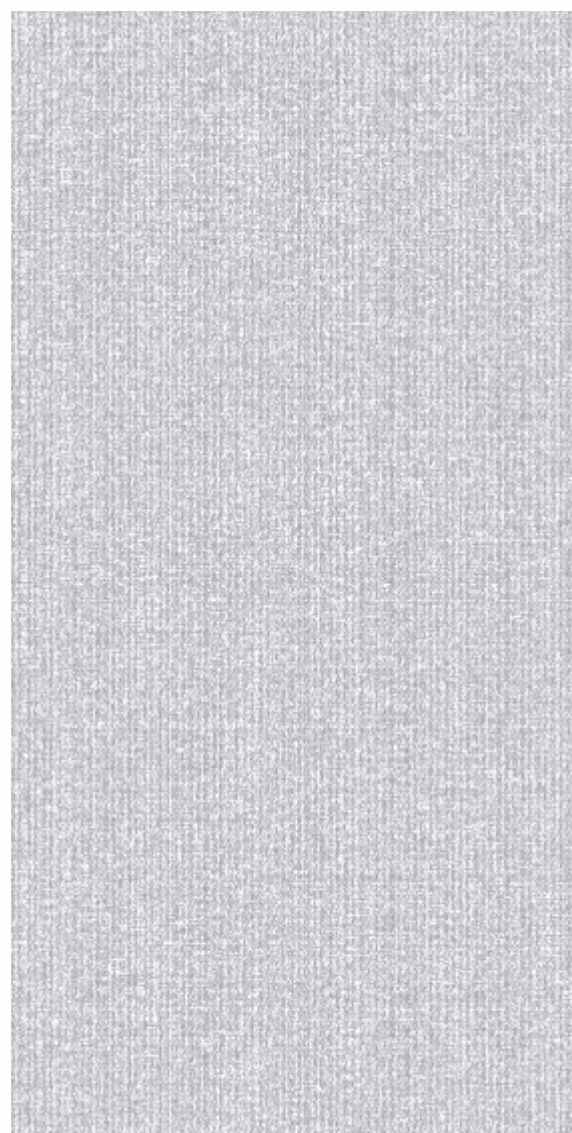
FI 1188 Creameweave (SF)



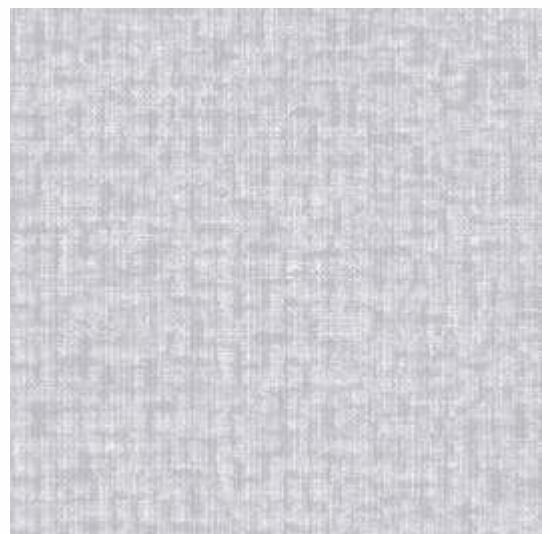
FULL SHEET VIEW



FI 1189 Greyweave (SF)



FULL SHEET VIEW



FI 1168 Wine Oak (SF)



FULL SHEET VIEW



FI 1169 Champagne Oak (SF)



FULL SHEET VIEW



FI 1683 Grey Stile (SF)



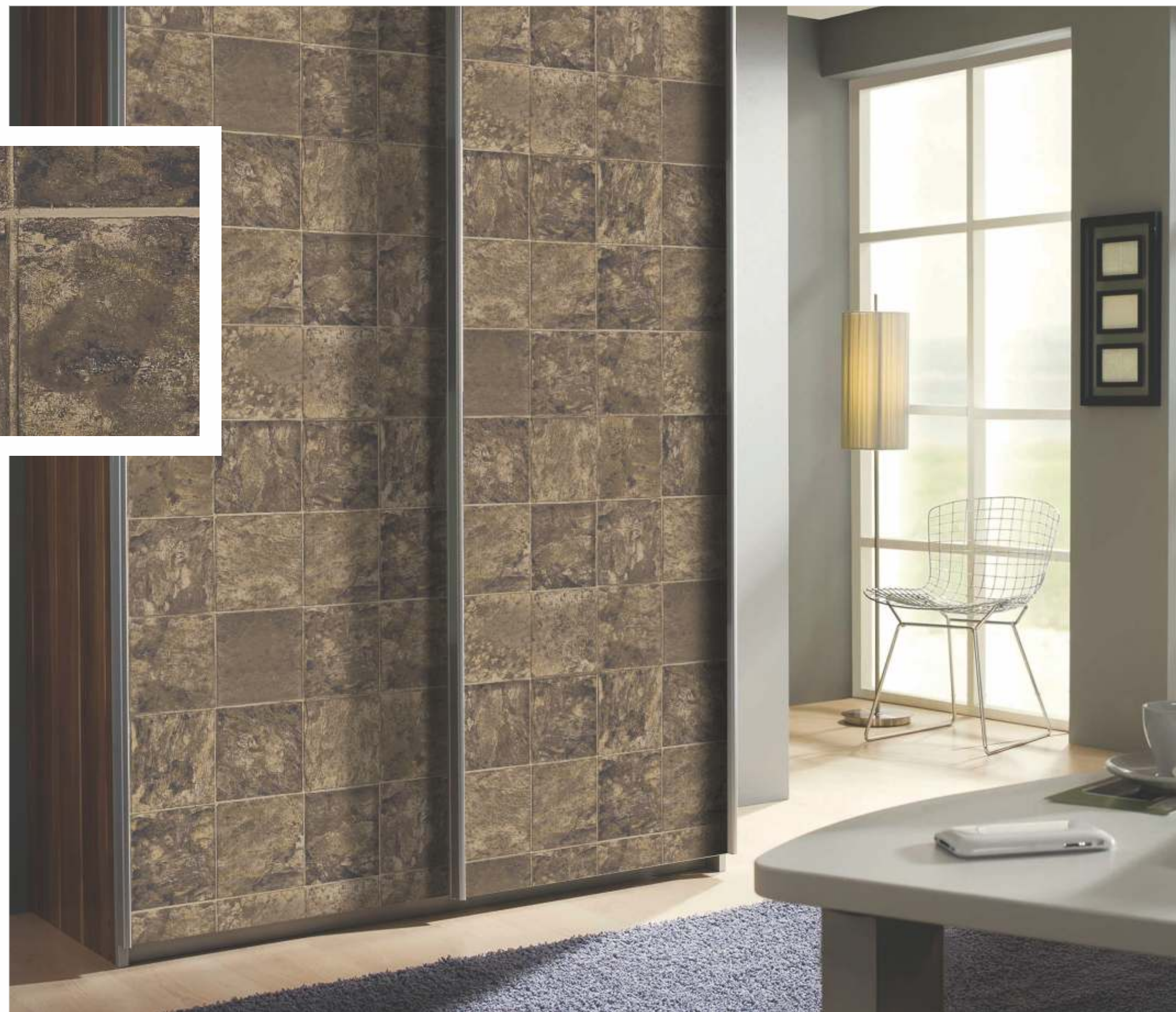
FULL SHEET VIEW



FI 1682 Brown Stile (SF)



FULL SHEET VIEW



FI 1150 Timber Canvas Wood
(SF)



FULL SHEET VIEW



FI 1151 Timber Canvas Dark
(SF)



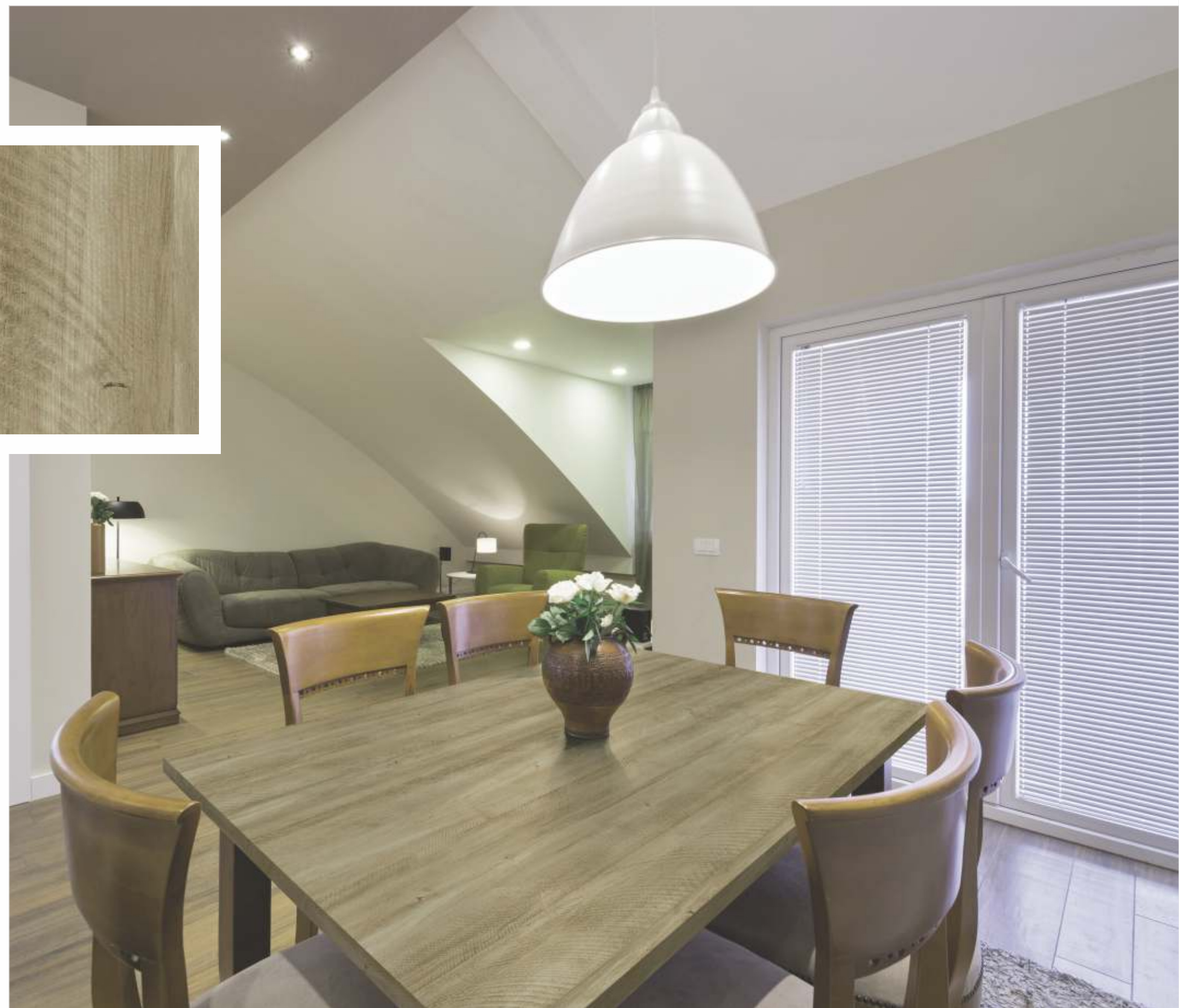
FULL SHEET VIEW



FI 1152 Timber Canvas Grey
(SF)



FULL SHEET VIEW



FI 1696 Tan (SF)



FULL SHEET VIEW



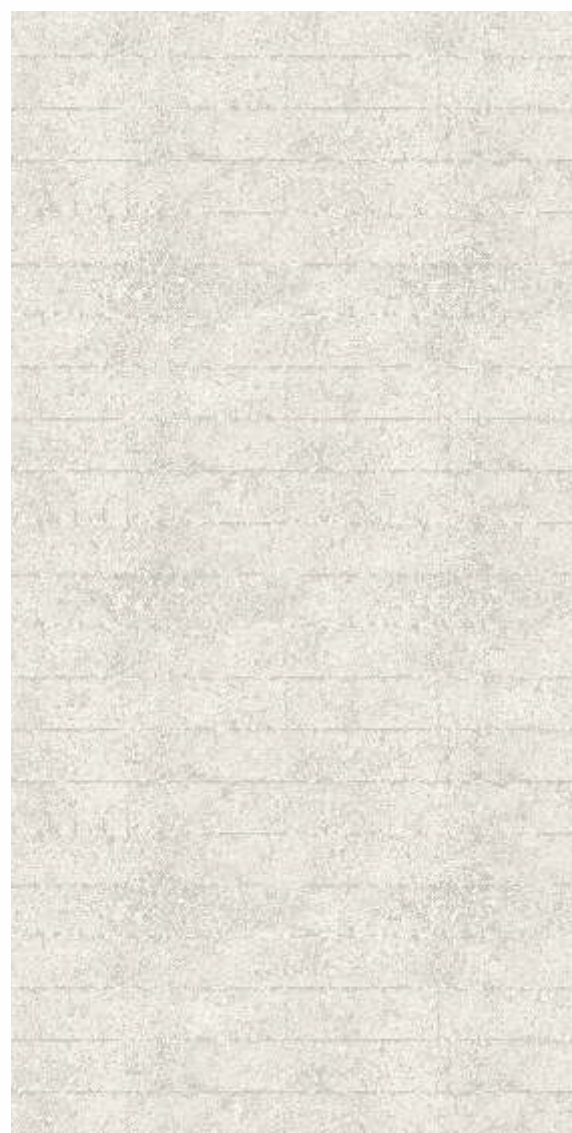
FI 1697 Ashen (SF)



FULL SHEET VIEW



FI 1695 Aglow (SF)



FULL SHEET VIEW



FI 1148 Alternate Oak Gentle
(SF)



FULL SHEET VIEW



FI 1149 Alternate Oak Rich (SF)



FULL SHEET VIEW



FI 1159 Rainbow Woodland
(SF)



FULL SHEET VIEW



FI 1160 Cloud Woodland (SF)



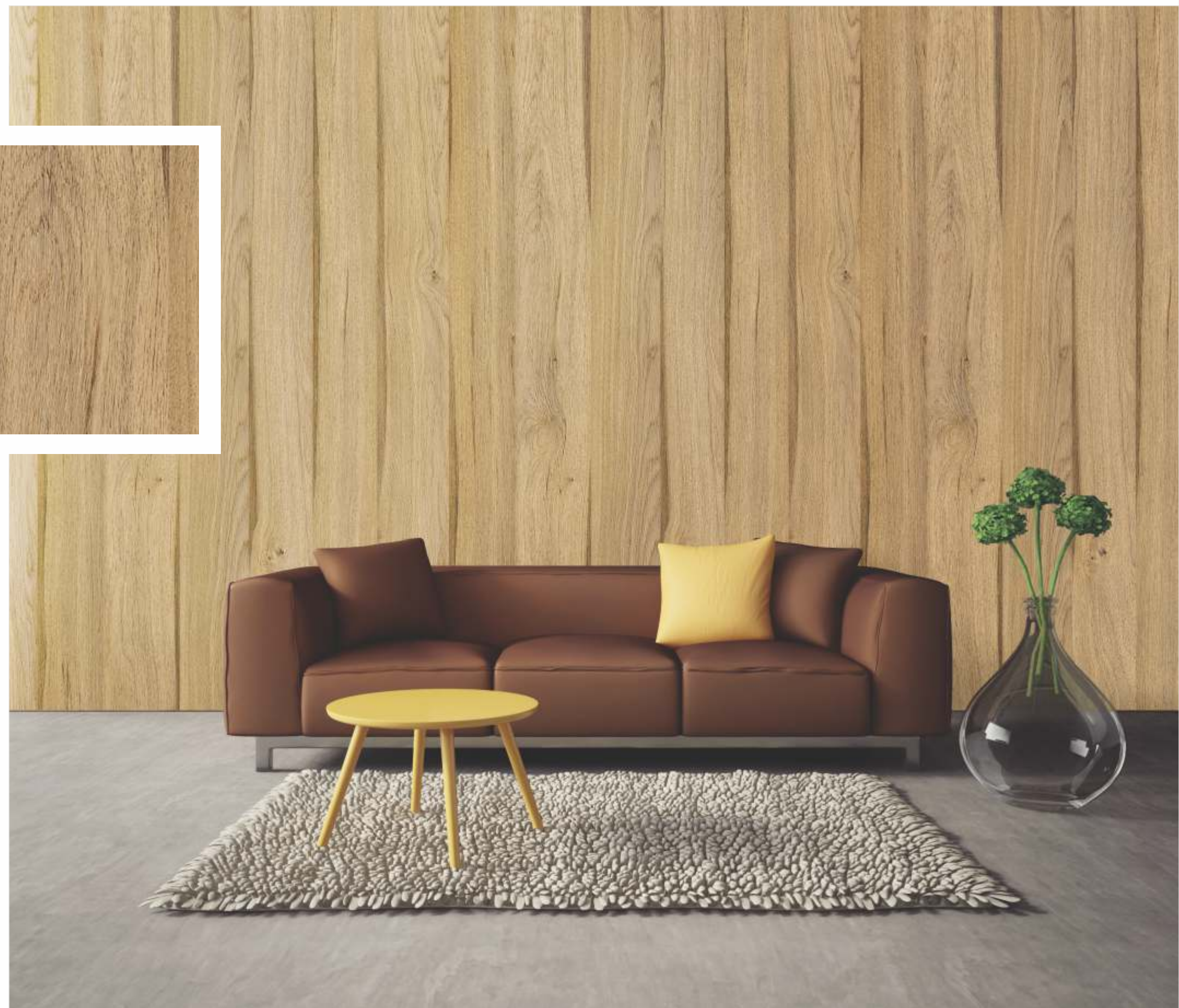
FULL SHEET VIEW



FI 1153 Conform Oak (SF)



FULL SHEET VIEW



FI 1155 Ebony Oak (SF)



FULL SHEET VIEW



FI 1154 Parched Oak (SF)



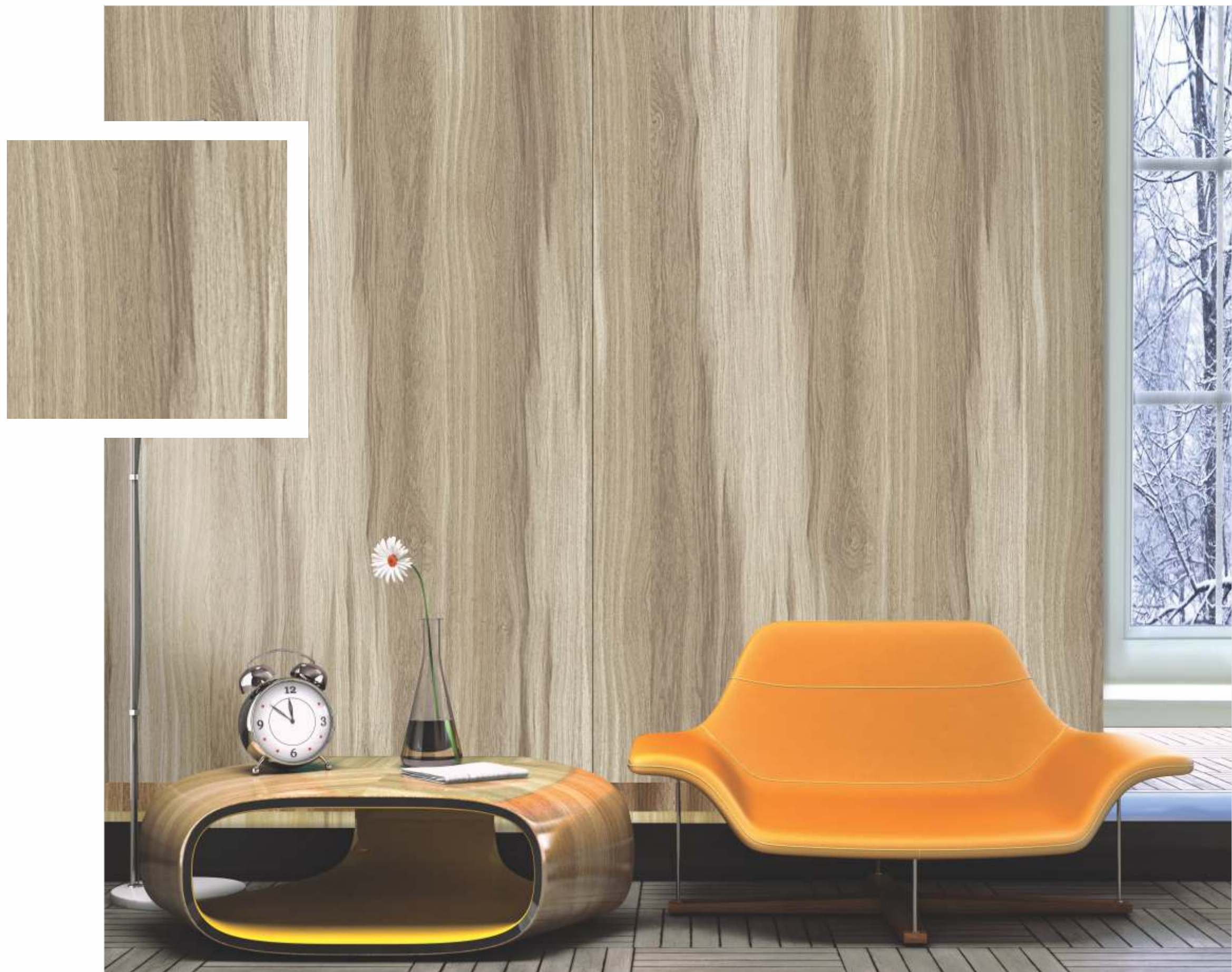
FULL SHEET VIEW



FI 1147 Lightweald (SF)



FULL SHEET VIEW



FI 1146 Wildweald (SF)



FULL SHEET VIEW



FI 1157 Finewood (SF)



FULL SHEET VIEW



FI 1158 Raywood (SF)



FULL SHEET VIEW



FI 1156 Driftwood (SF)



FULL SHEET VIEW



PROTECTING THE SURFACE

SCRATCH AND IMPACT PROTECTION

Formica Brand Laminates and surfacing material are resistant to scratch and impacts under normal use conditions.

- Do not chop, slice, pound, or hammer on any laminate surface
- Knives or other sharp utensils may slice or scratch the surface.
- Heavy blows from hammer or metal tenderizer may crack or gouge the surface
- Cookware still hot should not be placed directly on laminate surfaces
- Avoid ironing or placing a hot iron on laminate surfaces
- Do not place lighted cigarettes directly on laminate surfaces

Ordinary Cleaning

In most cases, you only need to use a clean, damp, non-abrasive cotton cloth and a mild liquid detergent or household cleaner and rinse with clean water. Do not flood the laminate, since water can penetrate and cause the substrate to swell. Dry the surface with a soft, clean, non-abrasive cotton cloth

Chemical Damage

Never use cleaners containing acid, alkali or sodium hypochlorite. These cleaners will mar, etch, corrode and permanently discolor the laminate surface. Also make sure that bottles, rags and other materials contaminated with these cleaners never come in contact with laminate surface.



TECHNICAL DATA SHEET

FORMICA 1MM CLASSIC + LAMINATES

S.No.	Property	Unit	Requirement as per IS 2046 : 1995 HGS	Typical Values
1	Appearance	-	Free from defects	Complies
2	Thickness	mm	1+/-0.1	1.03
3	Resistance to surface wear	Revolutions (Min.)	350 (Min.)	450
4	Resistance to immersion in boiling water	% Max, % Max Grade (Appearance Min)	9.6 11.5 4	6.1 7.9 5
5	Resistance to dry heat at 180°C	Grade (Min)	4	5
6	Dimensional stability at elevated temperature	% Max- 'L' % Max- 'T'	0.55 1.01	0.19 0.74
7	Dimensional stability at 20°C	% Max- 'L' % Max- 'T'	0.37 0.06	0.07 0.36
8	Resistance to impact by small diameter ball	'N' (Min.)	20	32
9	Resistance to cracking	Grade (Min)	4	5
10	Resistance to scratching	'N' (Min.)	2	4
11	Resistance to staining	Reagent 1+2 (Min.) Reagent 3+4 (Min.)	5 4	5 5
12	Light fastness (Resistance to colour change in Xenon arc light)	Wool Standard (Min.)	6	7
13	Resistance to cigarette bums	Grade (Min.)	3	4
14	Resistance to steam	Grade (Min.)	4	5



REGISTERED OFFICE & PLANT

Formica Laminates (INDIA) PVT. LTD.

591-592, 6Km Kalol-Vamaj Road, Village-Piyaj, Tal- Kalol, Dist- Gandhi Nagar, Gujarat-382721

HEAD OFFICE

Formica Laminates (INDIA) PVT. LTD., G4, B1 (EXT.) Mohan Co-Operative, Mathura Road, New Delhi-110044

www.formica-india.com
