

*Alu decoR*<sup>®</sup>



DISCOVER THE  
**NEW DIMENSION**

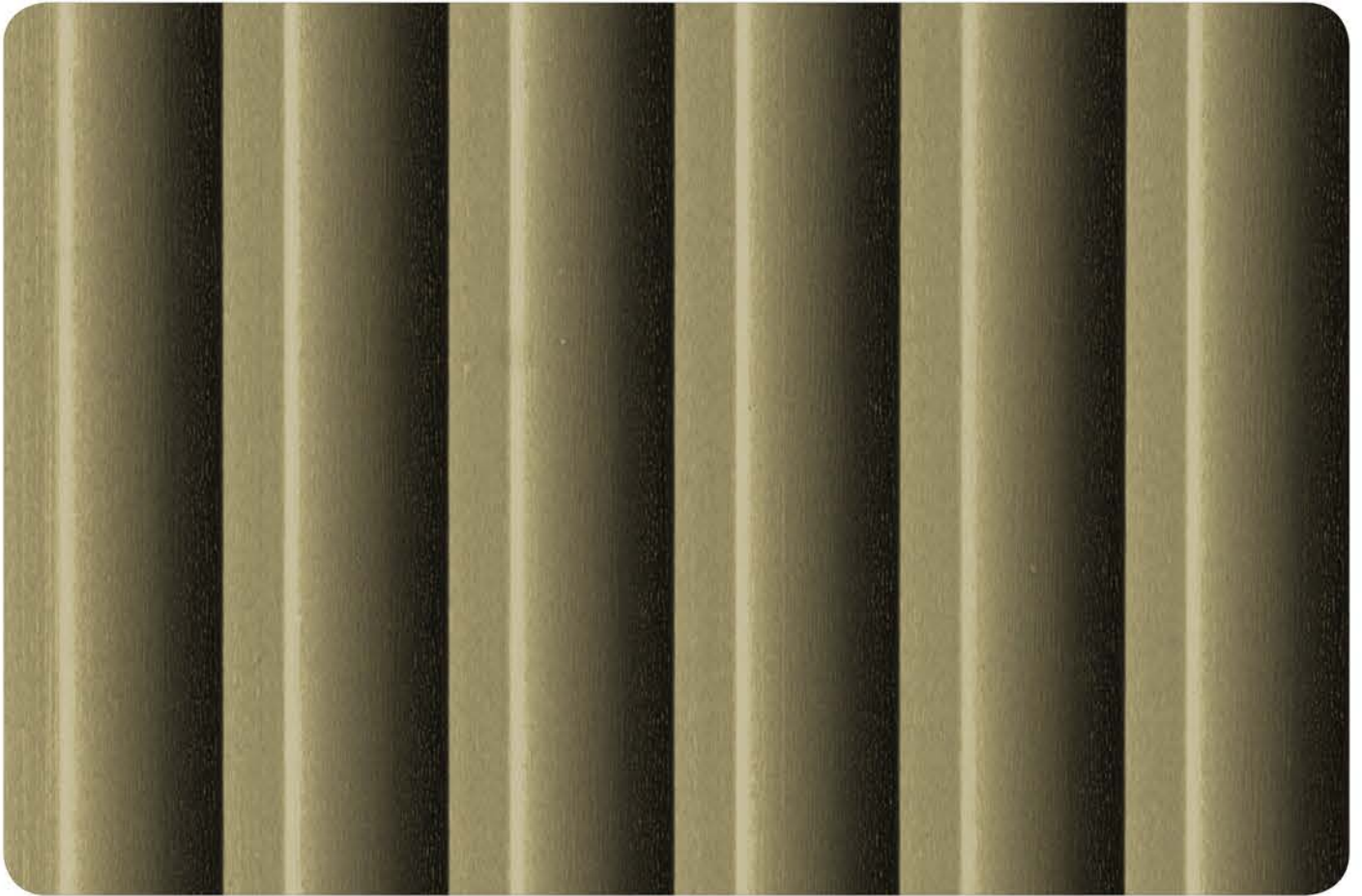
**CORTINA**  
S·E·R·I·E·S  
3D-STRIPE



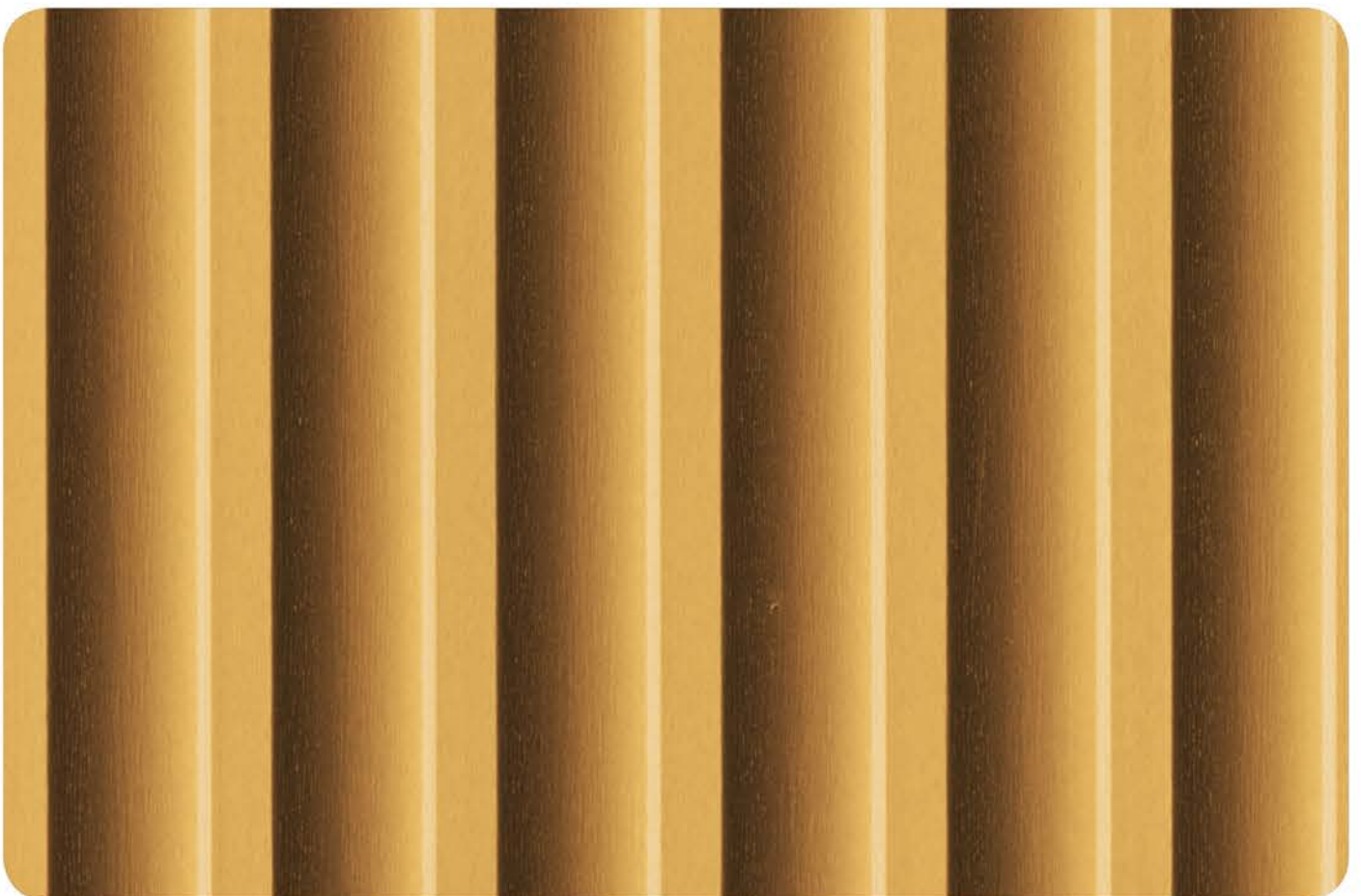
**We fit into any creative idea**

Cortina – the new 3D-Stripe ACP from Aludecor, will change the way you see stripes. Creative arrangement of highlight, midtones and shadow add a new dimension of depth to the design. Available in various attractive shades, Cortina will truly amaze you by its 3D effects.

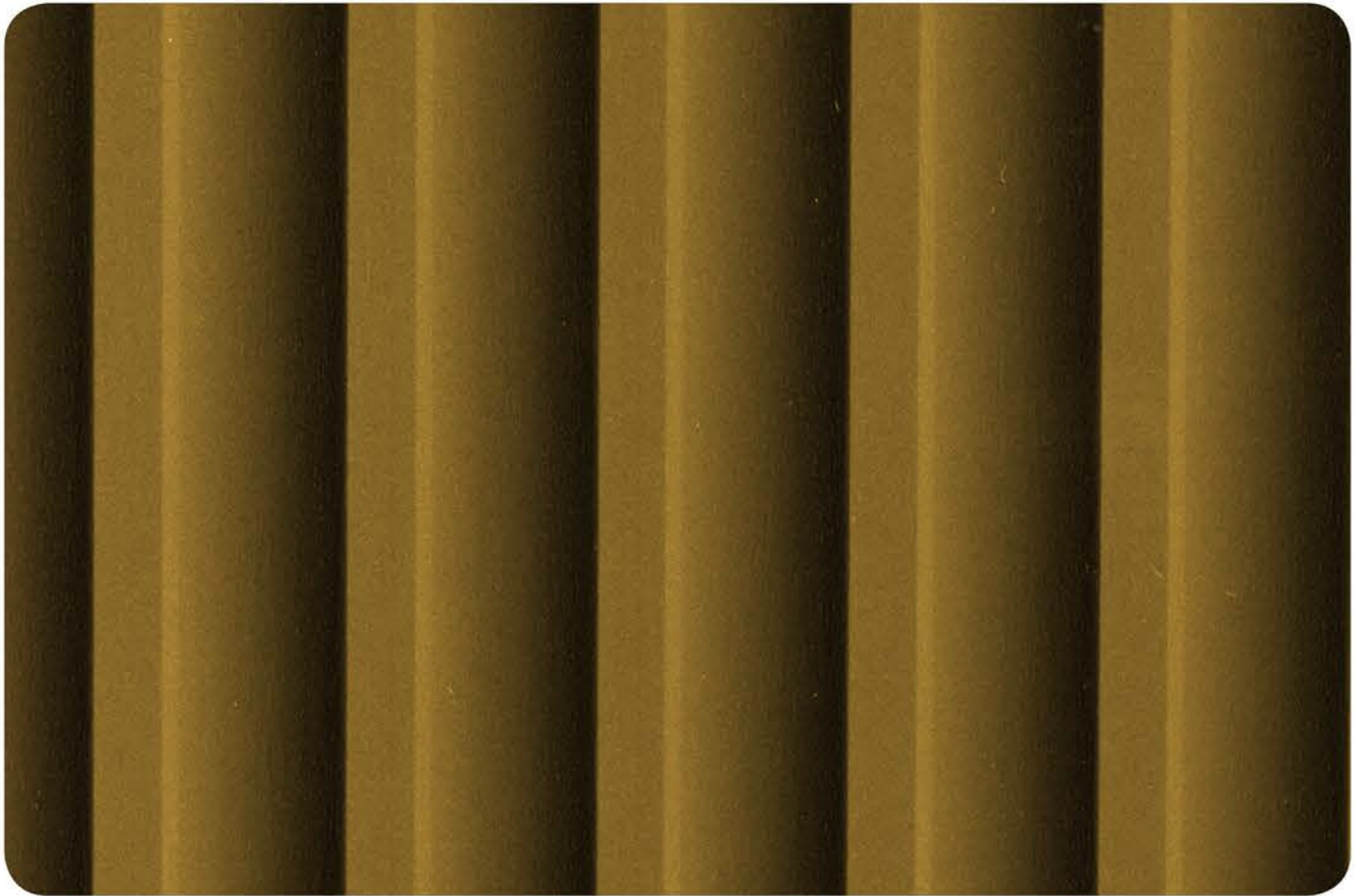
- 3D-Stripe creates a visual treat
- Imparts a contemporary look to interiors/facades
- Dynamic stripe pattern emanates energy
- Makes a room look more spacious and interactive
- Available in AL 45, AL 43 and AL 33 grades



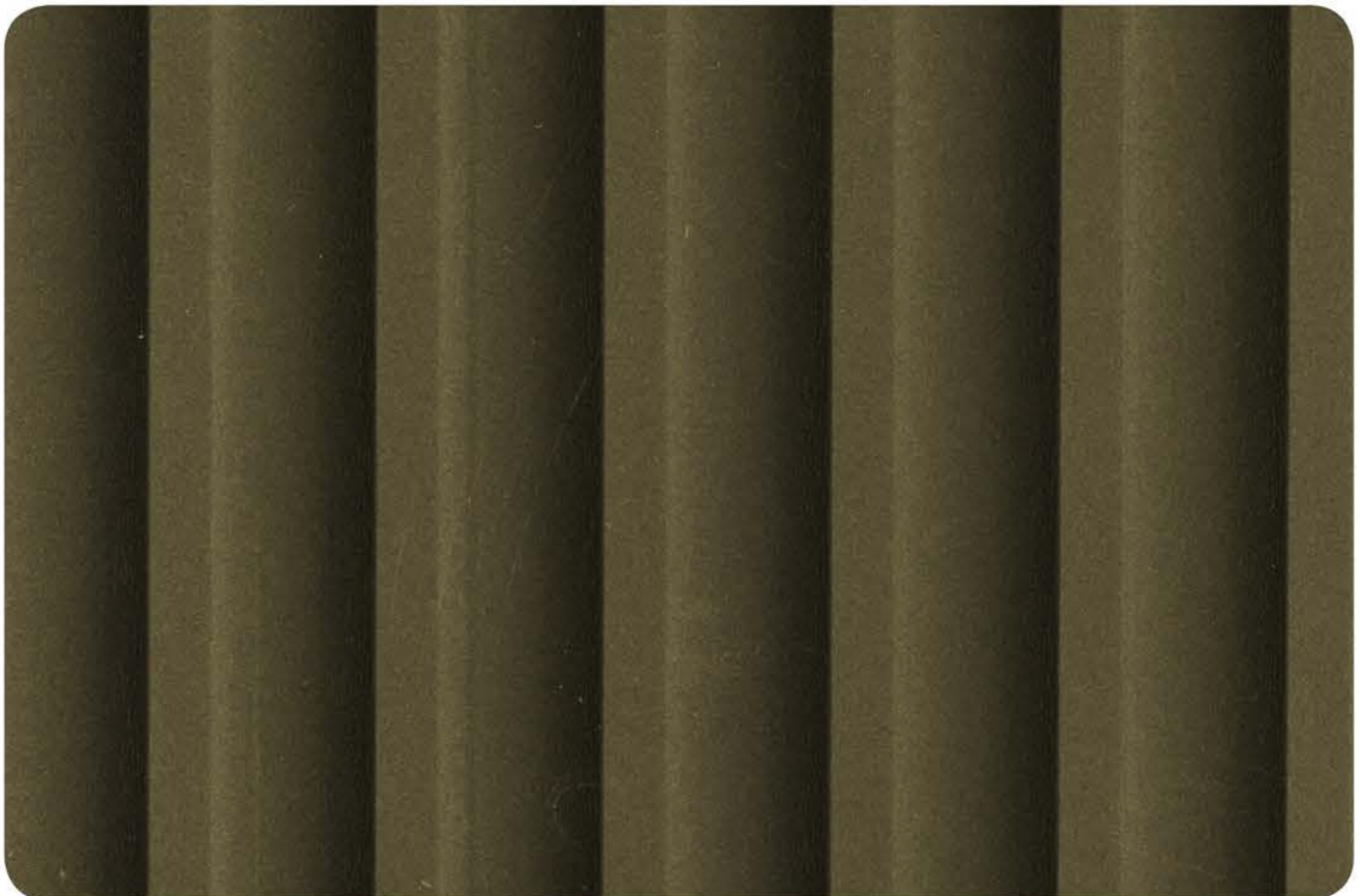
CT-01 | Tenor



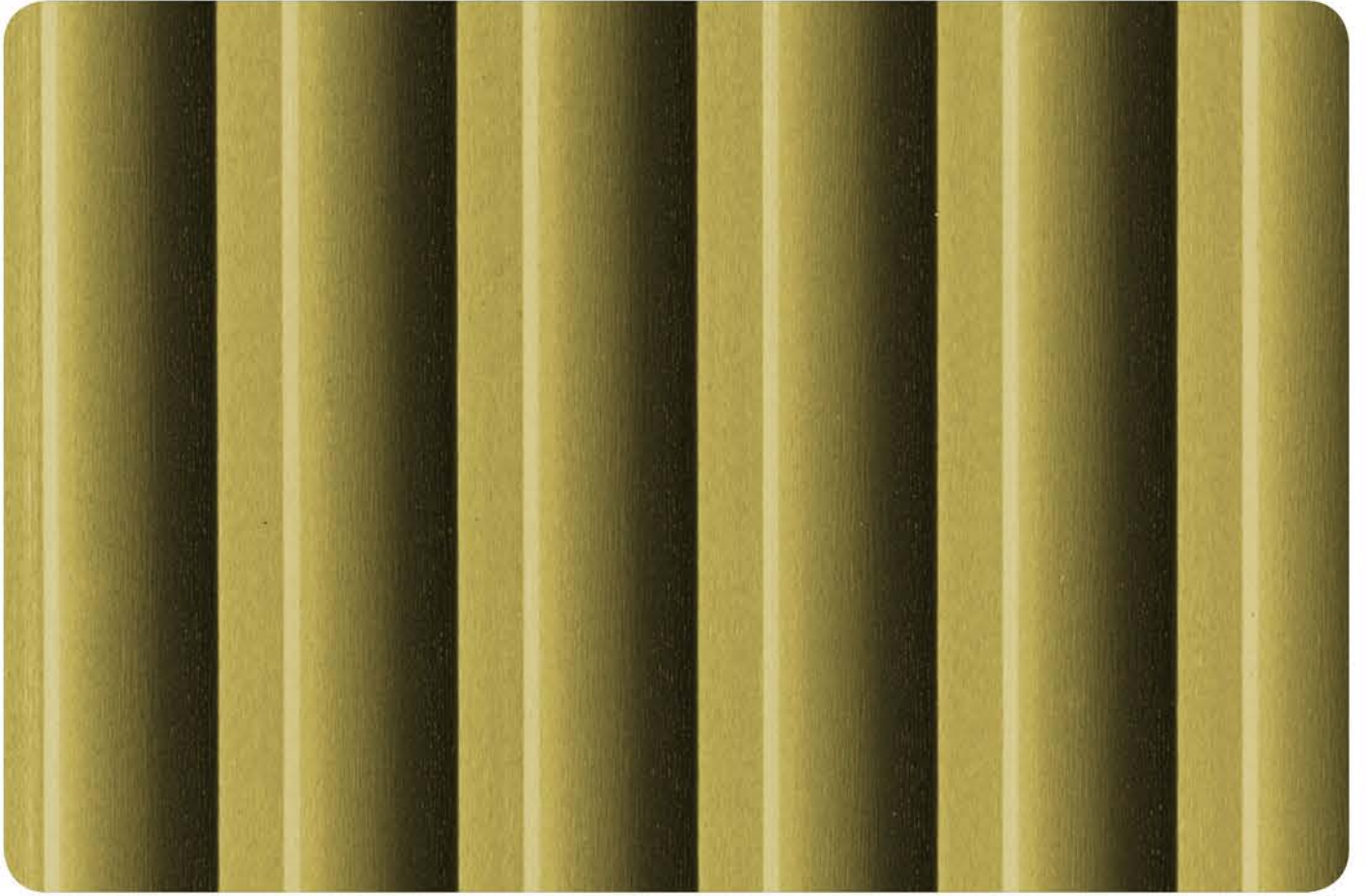
CT-03 | Beige



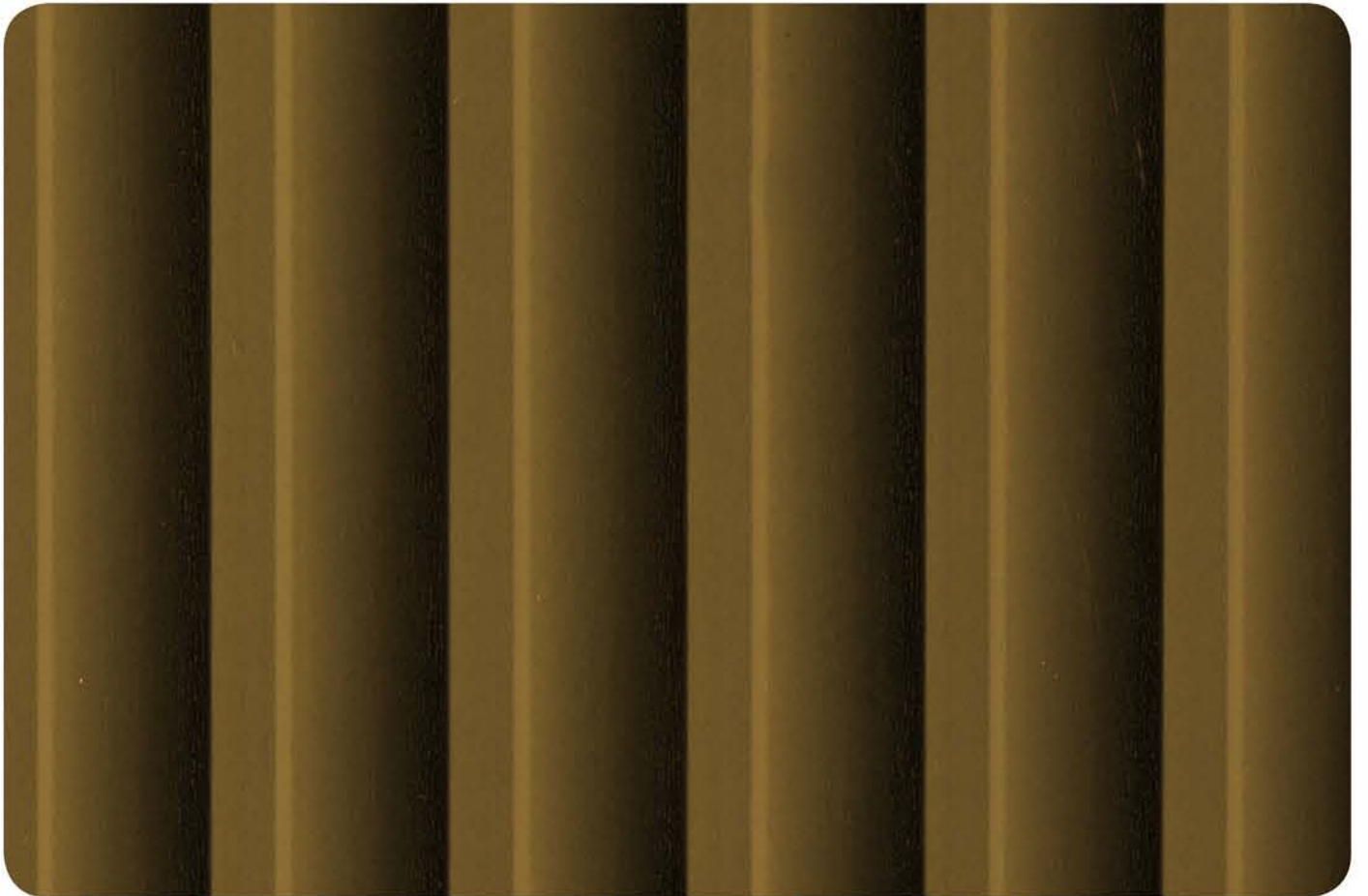
CT-08 | Gold



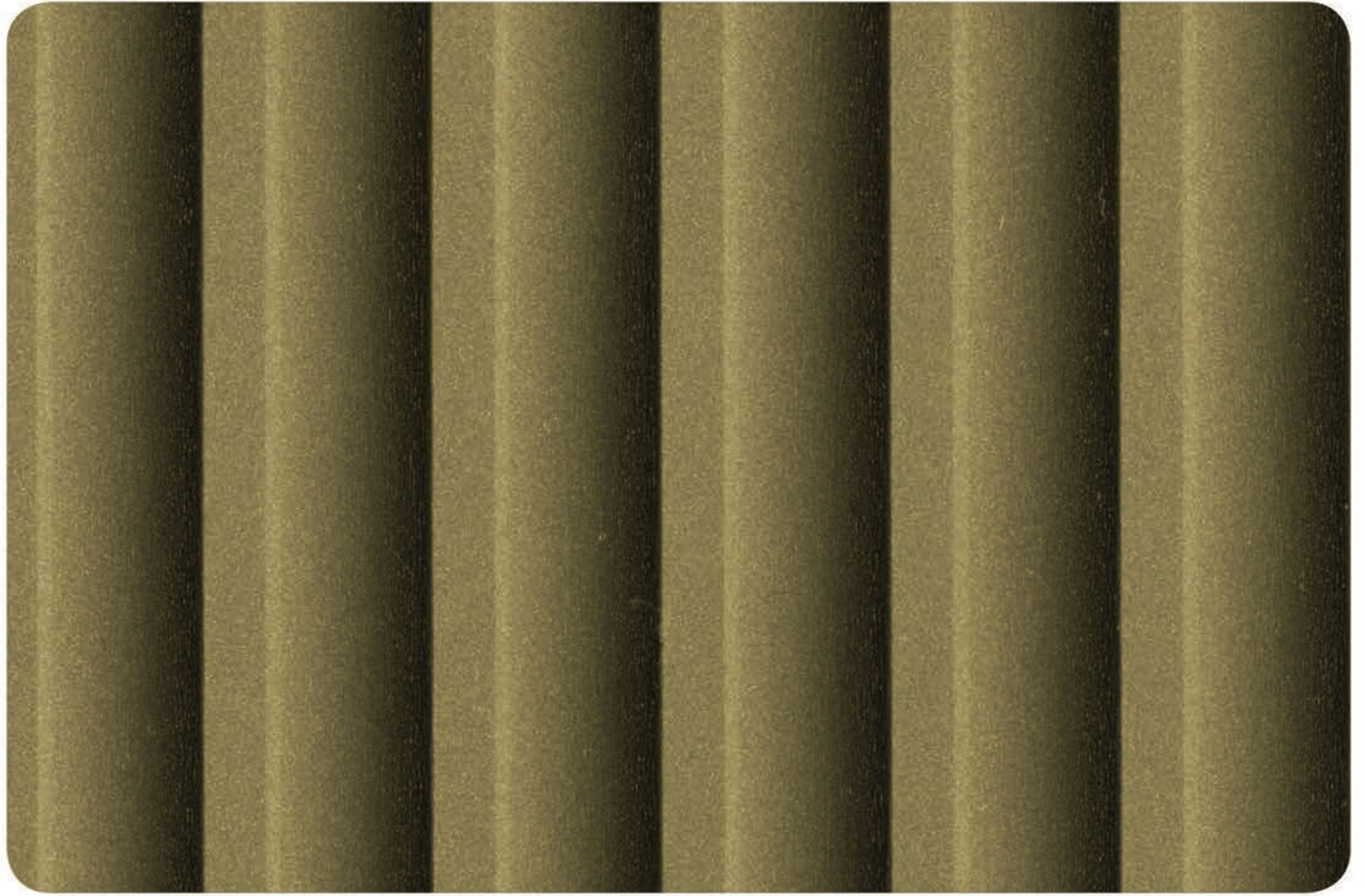
CT-10 | Metallic Black



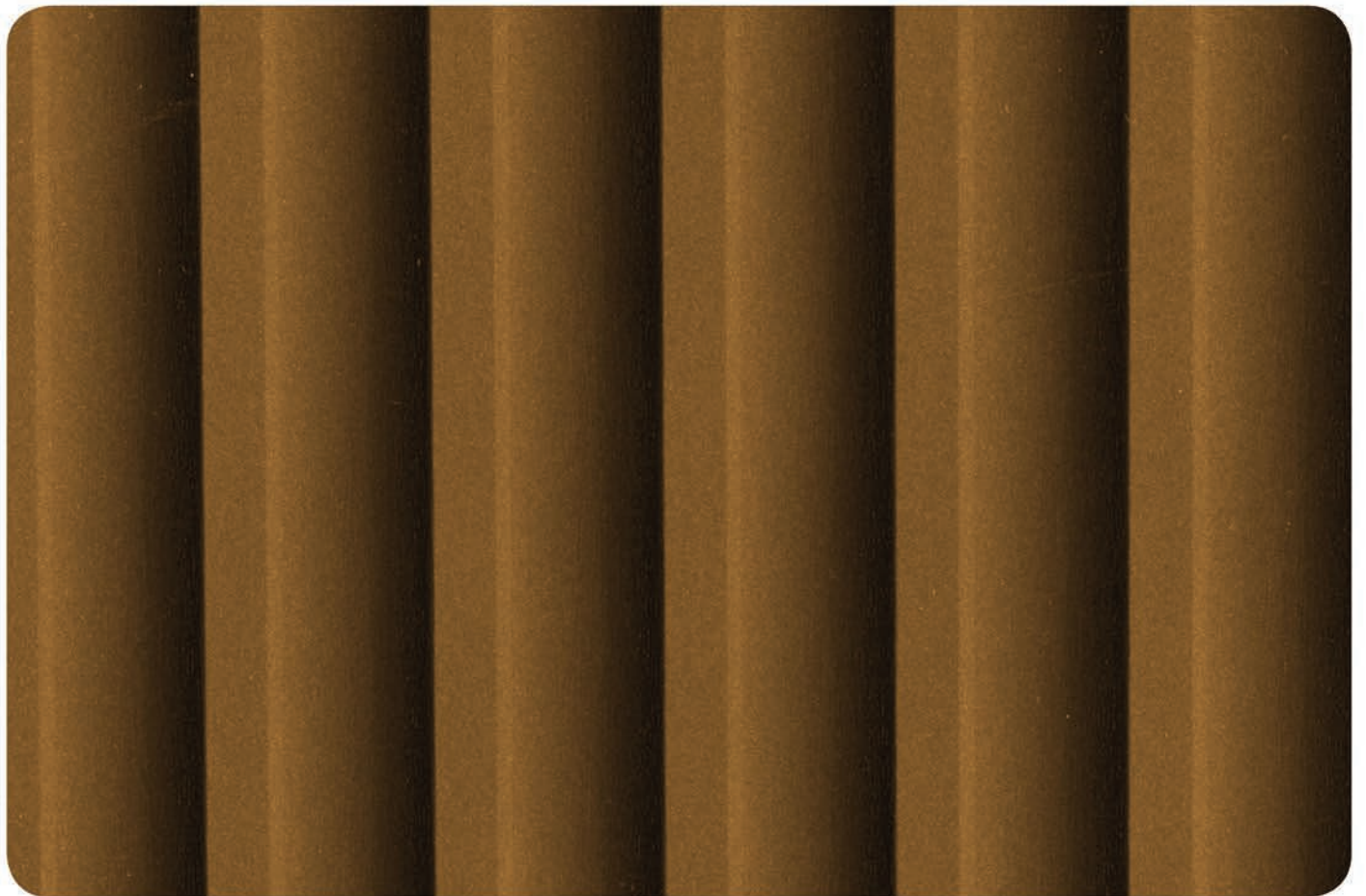
CT-02 | Silk Oyster



CT-04 | Quartz



CT-09 | Exotic Silver



CT-11 | Copper

Shades may vary from batch to batch. For warranty and related matters please contact our toll free number: 1800 102 0407

The colours presented on this chart are representations. Actual colour of manufactured product may vary from the chart. Colour perception is affected by degree of gloss, texture, and lighting conditions. For best results, always request a product sample.





## Setting global benchmarks

Aludecor Lamination Pvt. Ltd. forayed into the building and design domain to transform the look of tomorrow's constructions. A trendsetter in ACP and coated coils which embellish the interiors and exteriors of buildings, Aludecor has helped to create contemporary structures that are head turners as well.

Through constant technological innovations and research, Aludecor has set new standards of excellence and introduced a new aesthetic quotient.

Aludecor is proud of its pan-India presence. Expansive production units in Haridwar, a wide dealer network and a highly efficient sales team meet the challenges of the market with exemplary efficiency.

## ADVANTAGE ALUDECOR

- Direct Chill Processed Aluminium Alloy ensures Best Workability, Flexibility and Minimal Crack Risks
- Digital technology enabled unique and patented products by robust R&D and international quality labs
- Unmatched Product Flatness ensuring enhanced aesthetics of facades
- Premium Exterior Paint used through high-end coating technology ensures the highest gloss retention
- Unparalleled brilliance in metallic shades ensured by Steel Applicator Roll
- Double Coat Double Bake Line ensures zero elongation cracks on primer and paint surfaces and eliminates the chance of peel-off
- No lead poisoning owing to the use of lead-free paints
- The fire retardant variant (Firewall – mineral core) resists fire for 2 hours, doesn't lead to flashover, produces negligible smoke and 0 flaming droplets
- Green steps ensure that buildings qualify for LEED Credits MR 4.1, MR 4.2 and ID 1.1 to 1.4



Recyclable







## Head Office

**Kolkata** Suite No. 52, 5th Floor, 1, R.N. Mukherjee Road, Kolkata - 700001, West Bengal  
Ph: +91 33 40276600 | Fax: +91 33 22488763

## Zonal Offices

**Kolkata** Suite No. 320, 3rd Floor, 1 R.N. Mukherjee Road, Kolkata - 700001, West Bengal  
Ph: +91 33 40276600 | Fax: +91 33 22488763

**New Delhi** Building No. 41, 3rd Floor, M. M. Road, Rani Jhansi Road, New Delhi - 110055  
Ph: +91 11 45537777 | Fax: +91 11 45537799

**Mumbai** 402, Cello Triumph, I.B. Patel Road, Opp. Laghu Udyog  
Goregaon (E), Mumbai - 400063  
Ph: +91 22 26866633 | Fax: +91 22 26860521

**Chennai** 150/117, Montieth Road, Room No. 1, 4th Floor, Cisons Complex  
Next to Alsa Mall, Egmore, Chennai - 600008  
Ph: +91 44 42148831 | Fax: +91 44 42146226

**Bangalore** 69/5A Swamy Krupa Building, Flat No. 4, 2nd Floor, Near Bhanu Nursing Home  
Begur Hobli, Bommanahalli, Hosur Main Road, Bangalore - 560068  
Ph: +91 80 32919425 | Fax: +91 80 25730479

## Branch Offices

**Ahmedabad** C/510, 5th Floor, Dev Aurum, Opp. Commerce House  
Anand Nagar Road, Prahlad Nagar, Ahmedabad - 380015  
Ph: +91 79 40027101/100

**Kochi** 12/167 A1, Civil Line Road, Vazhakkala, Kakkanad, Thrikkakara Municipality Area  
Opp. St. Joseph Church, Ernakulam - 682030  
Ph: +91 484 4030260 | Fax: +91 484 4030299

**Pune** Office No. 4B – Wing, Gokul Nagar, Dnyaneshwar Paduka Chowk  
1184/4, F. C. Road, Shivaji Nagar, Pune – 411005, Ph: +91 20 25535220

**Lucknow** D-351, 1st Floor, Vibhuti Khand, Gomti Nagar, Lucknow - 226010  
Ph: +91 522 4071461

**Hyderabad** SY No. 12, MBN Reddy Estate, Malla Reddy Garden, Plassey Lane, Bowenpally, Secunderabad  
Hyderabad, Telangana - 500009, Ph: +91 40 42024883

**Ghaziabad** 22-B, Rajendranagar Industrial Area, Sahibabad, Dist. Ghaziabad (U.P.)

## Works

**Haridwar** (Unit 1) Plot No. 95, 96 & 97, Sector-V, IIE, Sidcul, Ranipur, BHEL, Haridwar, Uttarakhand - 249403  
Ph: +91 133 4239343 | Fax: +91 133 4239342  
(Unit 2) Plot No. 31A, Sector-11, IIE, Sidcul, Ranipur, BHEL, Haridwar, Uttarakhand - 249403

Toll Free No.: 1800 102 0407 | [info@aludecor.com](mailto:info@aludecor.com), [feedback@aludecor.com](mailto:feedback@aludecor.com) | [www.aludecor.com](http://www.aludecor.com)

CIN: U27203WB2004PTC099221

A percentage of our sales proceeds is used for welfare purposes